

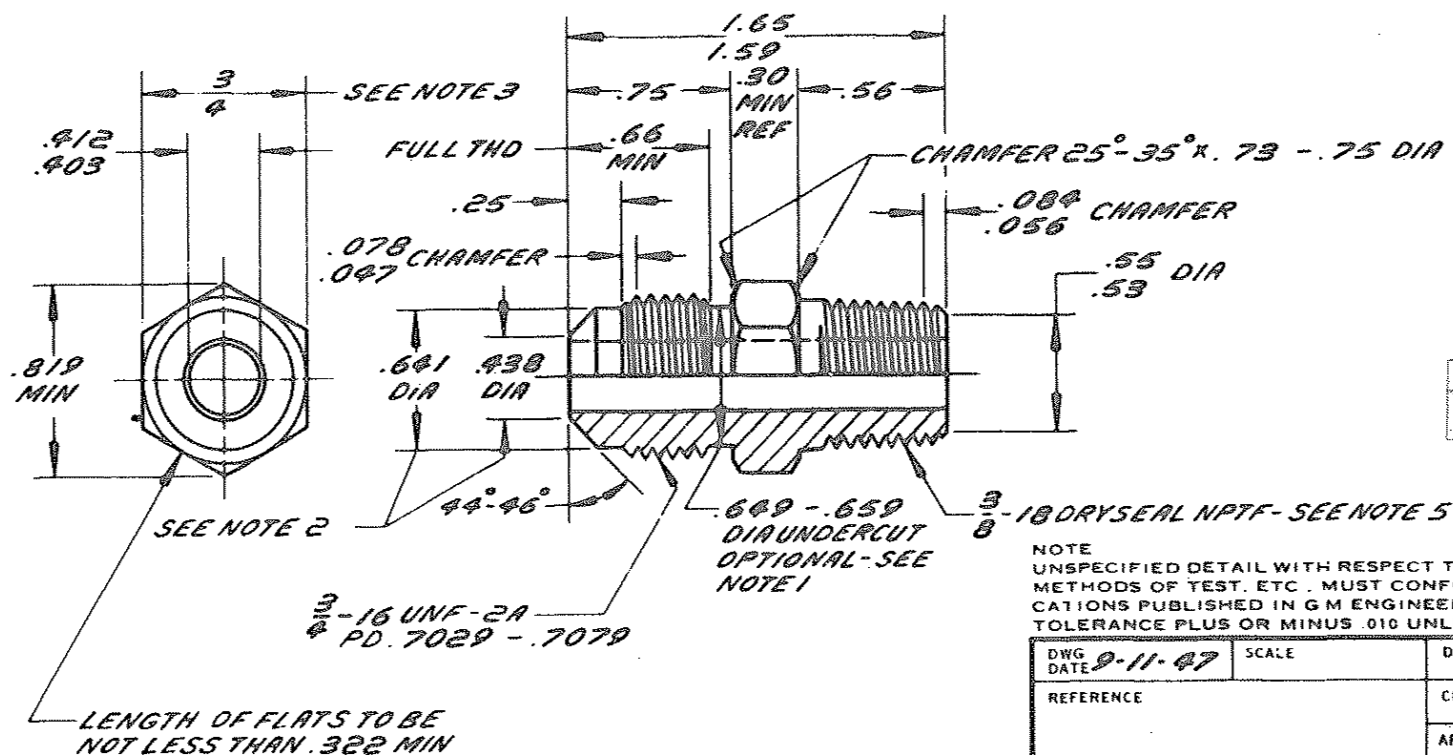
NOTES:

1. WHERE UNDERCUT IS USED, LAST THD SHALL BE CHAMFERED .031 - .062 LONG FROM UNDERCUT DIA AND FULL THD LENGTH MAY BE REDUCED TO .63 MIN.
2. NOSE DIA MUST BE CONCENTRIC WITH THD PD WITHIN .010 TIR.
3. COMMERCIAL BAR STOCK TOLERANCES SHALL APPLY.
4. OFFSET NOT TO EXCEED .015 AT MEETING POINT OF PASSAGES MACHINED FROM OPPOSITE ENDS.
5. DIA OF BODY BEYOND ROLLED NPTF THD MAY BE .638 MIN.

40

118752

DATE	SYM	REVISION RECORD	AUTHORITY	DR	CHK
6-11-71	6	REDRAWN & REVISED		RD	



1718 104

NOTE
UNSPECIFIED DETAIL WITH RESPECT TO DIMENSIONS, MATERIAL,
METHODS OF TEST, ETC., MUST CONFORM TO GENERAL SPECIFI-
CATIONS PUBLISHED IN G M ENGINEERING STANDARDS
TOLERANCE PLUS OR MINUS .010 UNLESS OTHERWISE SPECIFIED

DWG DATE 9-11-47	SCALE	DR BS
REFERENCE	CHK IK	
	APPD	
MATERIAL SPEC SAE CA360 (HALF HARD), SAE CA345 OR SAE CA350 BRASS		
NAME CONNECTOR - 45° FLARED TUBE		
PART NO. 118752		

77 ENGINEERING STANDARDS SECTION