

TÜRASAS ESKİŞEHİR REGIONAL DIRECTORATE	TECHNICAL DATA	T.B. 6628			
		REVISION	B	C	D
		DATE	29.12.2021	21.01.2022	28.04.2025
		SIGNATURE			
SUBJECT Console Lamps					
REFERENCE E5000 Type National Electric Mainline Locomotive					
<p>1. SUBJECT</p> <p>This Technical Data includes the minimum requirements of the console lamps for E5000 Type National Electric Mainline Locomotive.</p> <p>2. GENERAL REQUIREMENTS</p> <p>2.1.The products shall comply with the standards of EN 50155 and EN 45545-2 (OC3 - HL2). An accredited laboratory or NoBo approved certificate of conformity for the requested standards shall be given with the delivery of the product.</p> <p>2.2. The Bidders shall submit type test/routine test reports of the lamps with the bid.</p> <p>2.3. The Bidders shall submit the document containing technical information and dimensions of the lamps, 3D CAD/step files and wiring diagram with interface described in detail (connector types, pin assignments, etc.) with the bid.</p> <p>2.4. The Bidders shall provide spare parts supply for 10(ten) years.</p> <p>2.5.All parts used specifically for the supplied product/equipment will be delivered to the Administration together with the offer, in a list (product tree) (all spare parts required for 1 locomotive with part numbers and price information). If the Administration determines that the list is insufficient, the Contractor will re-prepare the list in the format requested by the Administration. This process will continue until the final document is obtained.</p> <p>2.6.The Contractor shall submit the document containing numbered list of all parts of the product with exploded pictures.</p> <p>2.7.The works to be carried out by the Contractor within the scope of RAMS are given in ANNEX -1: TŞ.400133 E5000 RAMS Requirements Specification and its relevant annexes.</p> <p>3. TECHNICAL SPECIFICATIONS</p> <p>3.1.Console lamps shall provide the following technical specifications:</p> <ul style="list-style-type: none"> -Nominal Operating Voltage: 110V DC (77 - 137,5V DC) -Led Color/Type: White LED -Luminous Intensity@1m : Min. 10 lux -Power: Max 2 Watt <p>3.2.The lamps shall be able to operate under EN 50125-1 T3 temperature and ambient conditions.</p> <p>3.3.The lamps shall end with plug (connector). The counter part of connector shall also be provided by the Contractor. The length of the cable connected to the lamp and terminated with the connector shall be 250 ± 10 mm.</p>					
PREPARED BY	Electric & Electronic Sys. Dept.	DATE	13.04.2020	PAGE	1/2

TÜRASAS ESKİŞEHİR REGIONAL DIRECTORATE	TECHNICAL DATA	T.B. 6628			
		REVISION	B	C	D
		DATE	29.12.2021	21.01.2022	28.04.2025
		SIGNATURE			

SUBJECT Console Lamps
REFERENCE E5000 Type National Electric Mainline Locomotive

3.4.All components (mechanical and electrical interfaces) for the manufacture and installation of the lamps shall be provided by the Contractor.

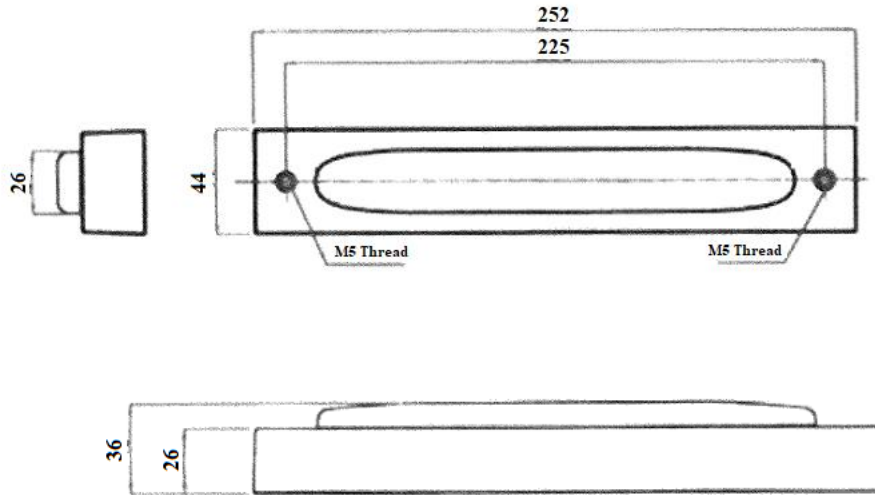
3.5.The lamps shall provide the dimensions specified in the Technical Data. The offered products will be evaluated in terms of mechanical assembly and the unsuitable products will be rejected.

4. GUARANTEE

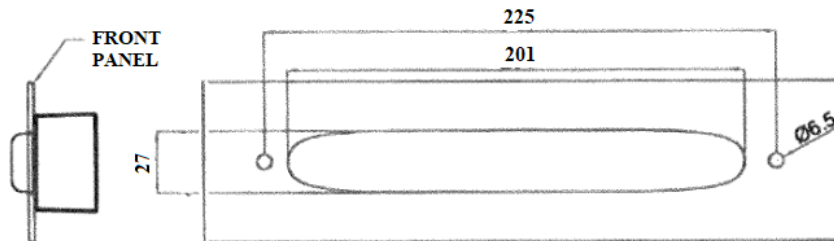
The products shall have 24 (twenty-four) months guarantee.

5. ANNEXES

ANNEX -1: TŞ.400133 E5000 RAMS Requirements Specification (ANNEX-1 and ANNEX-14)



Mounting Dimensions:



PREPARED BY	Electric & Electronic Sys. Dept.	DATE	13.04.2020	PAGE	2/2
-------------	----------------------------------	------	------------	------	-----