

TÜRASAS ESKİŞEHİR REGIONAL DIRECTORATE	TECHNICAL DATA	T.B. 6626			
		REVISION	C	D	E
		DATE	21.01.2022	28.04.2025	26.06.2025
		SIGNATURE			
SUBJECT Driver's Cabin Lamps REFERENCE E5000 Type National Electric Mainline Locomotive					
<p><b>1. SUBJECT</b></p> <p>This Technical Data includes the minimum requirements of the driver's cabin lamps for E5000 Type National Electric Mainline Locomotive.</p> <p><b>2. GENERAL REQUIREMENTS</b></p> <p><b>2.1.</b>The products shall comply with the standards of EN 50155, EN 50121-3-2, EN 61373 and EN 45545-2 (OC3 - HL2). An accredited laboratory or No-Bo approved certificate of conformity for the requested standards shall be given with the delivery of the product.</p> <p><b>2.2.</b>The Bidders shall submit type test/routine test reports of the lamps with the bid.</p> <p><b>2.3.</b>The Bidders shall submit the document containing technical information and dimensions of the lamps, 3D CAD/step files and wiring diagram with interface described in detail (connector types, pin assignments, etc.) with the bid.</p> <p><b>2.4.</b>The Bidders shall provide spare parts supply for 10 (ten) years.</p> <p><b>2.5.</b>All parts used specifically for the supplied product/equipment will be delivered to the Administration together with the offer, in a list (product tree) (all spare parts required for 1 locomotive with part numbers and price information). If the Administration determines that the list is insufficient, the Contractor will re-prepare the list in the format requested by the Administration. This process will continue until the final document is obtained.</p> <p><b>2.6.</b>The Contractor shall submit the document containing numbered list of all parts of the product with exploded pictures.</p> <p><b>2.7.</b>The works to be carried out by the Contractor within the scope of RAMS are given in ANNEX -1: TŞ.400133 E5000 RAMS Requirements Specification and its relevant annexes.</p> <p><b>3. TECHNICAL SPECIFICATIONS</b></p> <p><b>3.1.</b>Cabin lamps shall provide the following technical specifications:</p> <ul style="list-style-type: none"> <li>-Nominal Operating Voltage: 110V DC (77 - 137,5V DC)</li> <li>-Led Colour/Type: White LED</li> <li>-Led Colour Temperature: 3500K ±250K</li> <li>-Luminous Intensity@1m: 250 lux ± 10%</li> <li>-Power: Max 20 Watt</li> </ul> <p><b>3.2.</b> The lamps shall have both dim and full lighting intensity.</p> <p><b>3.3.</b>The lamps shall end with plug (connector). The counter part of connector shall also be provided by the Contractor. The length of the cable connected to the lamp and terminated</p>					
PREPARED BY	Electric & Electronic Sys. Dept.	DATE	13.04.2020	PAGE	1/2

TÜRASAS ESKİŞEHİR REGIONAL DIRECTORATE	TECHNICAL DATA	T.B.6626					
		REVISION	C	D	E		
		DATE	21.01.2022	28.04.2025	26.06.2025		
		SIGNATURE					
SUBJECT		Driver's Cabin Lamps					
REFERENCE		E5000 Type National Electric Mainline Locomotive					

with the connector shall be  $250 \pm 10$  mm.

**3.4.**All components (mechanical and electrical interfaces) for the manufacture and installation of the lamps shall be provided by the Contractor.

**3.5.**The lamps shall be able to operate under EN 50125-1 T3 temperature and ambient conditions.

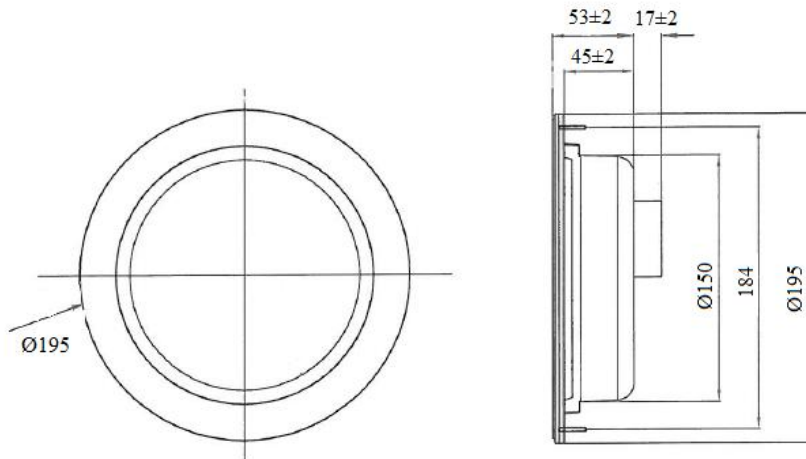
**3.6.**The lamps shall provide the dimensions specified in the Technical Data. The offered products will be evaluated in terms of mechanical assembly and the unsuitable products will be rejected.

#### 4. GUARANTEE

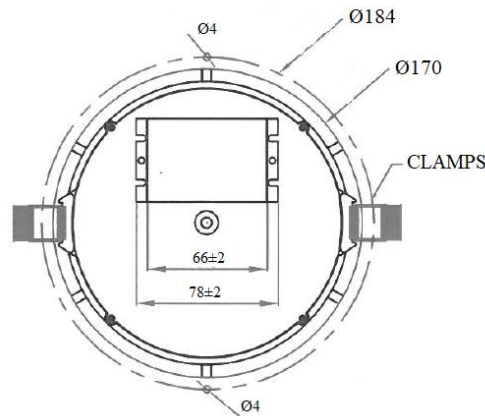
The products shall have 24 (twenty-four) months guarantee.

#### 5. ANNEXES

**ANNEX -1:** TŞ.400133 E5000 RAMS Requirements Specification (ANNEX-1 and ANNEX-14)



Mounting Dimensions:



PREPARED BY	Electric & Electronic Sys. Dept.	DATE	13.04.2020	PAGE	2/2
----------------	----------------------------------	------	------------	------	-----