

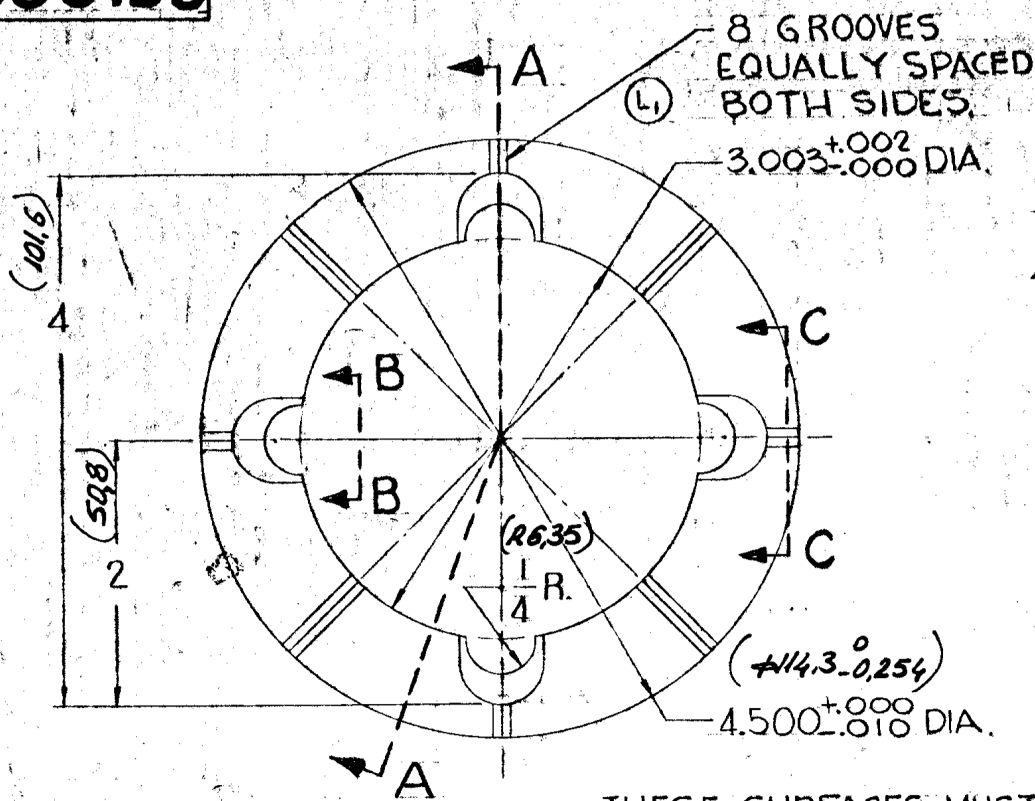
8069139

TOLERANCES ON ALL DIMENSIONS NOT SPECIFIED ON THE DRAWING TO BE IN ACCORDANCE WITH A.S.T.M. 2100.

BREAK ALL SHARP CORNERS UNLESS OTHERWISE SPECIFIED.

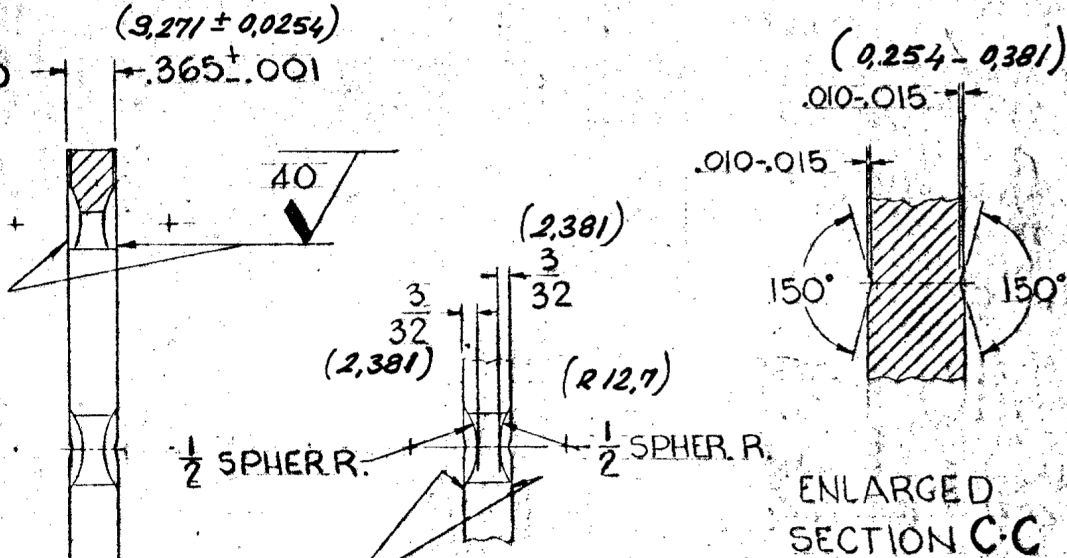
COUNTERSINK ALL TAPPED HOLES 118° X ONE THRD DEEP.

SURFACE FINISH SPEC. IS IN ACCORDANCE WITH G.M. ENGR. STDS.



THESE SURFACES MUST BE PARALLEL WITHIN .001 TOTAL.

SECTION A-A



EDGES MUST BE WELL ROUNDED.

VIEW B-B

Yr No 691044

MATERIAL:
 EMS 403 BRONZE, CENTRIFUGALLY CAST.
 EMS 970 PLATED COATING .0002-.0007 THICK.
 ALL DIMENSIONS ARE AFTER PLATING.
 FINISH ALL OVER.

ENGINEERING APPROVAL OF SOURCE REQUIRED

REV. NO.	REV. LET.	REVISION	DATE	BY	CK.	APV'D.

REV. NO.	REV. LET.	REVISION	DATE	BY	CK.	APV'D.

NO. REQUIRED PER ASSEMBLY	MATERIAL
	SEE NOTE
DR. SCHROEDER	DATE 7-26-42
CK. WELLMAN	3-5-42
SUP. C.F. ZAITZ	3-6-42
WELD. MOD. ENGR.	
NAT'L. A.K.	ENGR. E.W.K.

NAME OF PART	PART NO.	IT. NO.
ELECTRO-MOTIVE DIVISION GENERAL MOTORS CORPORATION LA GRANGE, ILLINOIS, U.S.A.		
THRUST WASHER		
DATE OF PRINT	PART NO.	
	8069139	