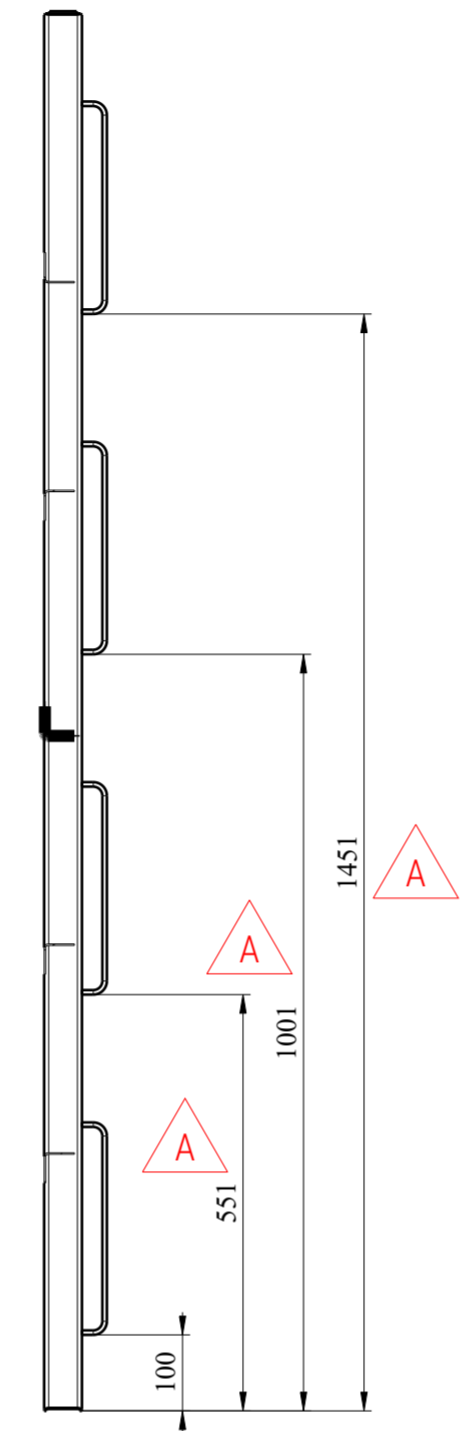
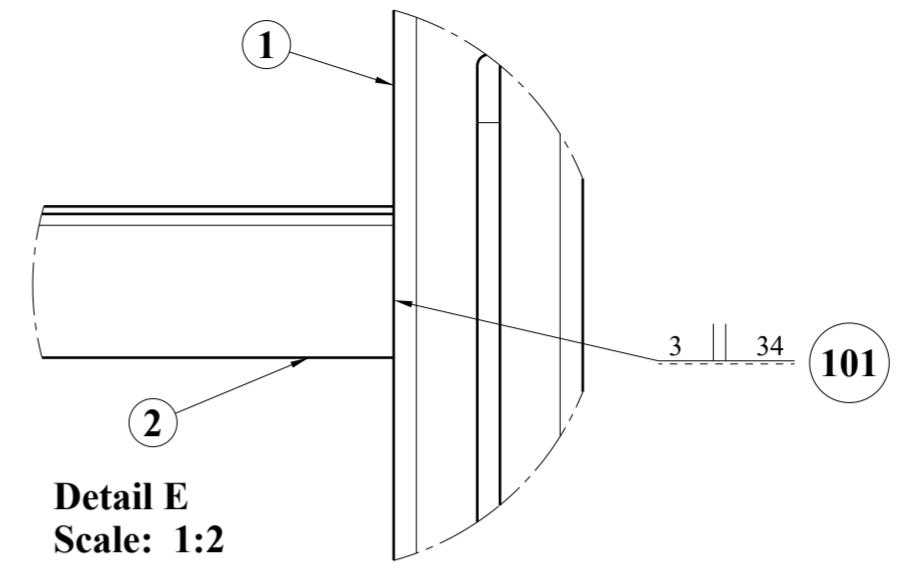


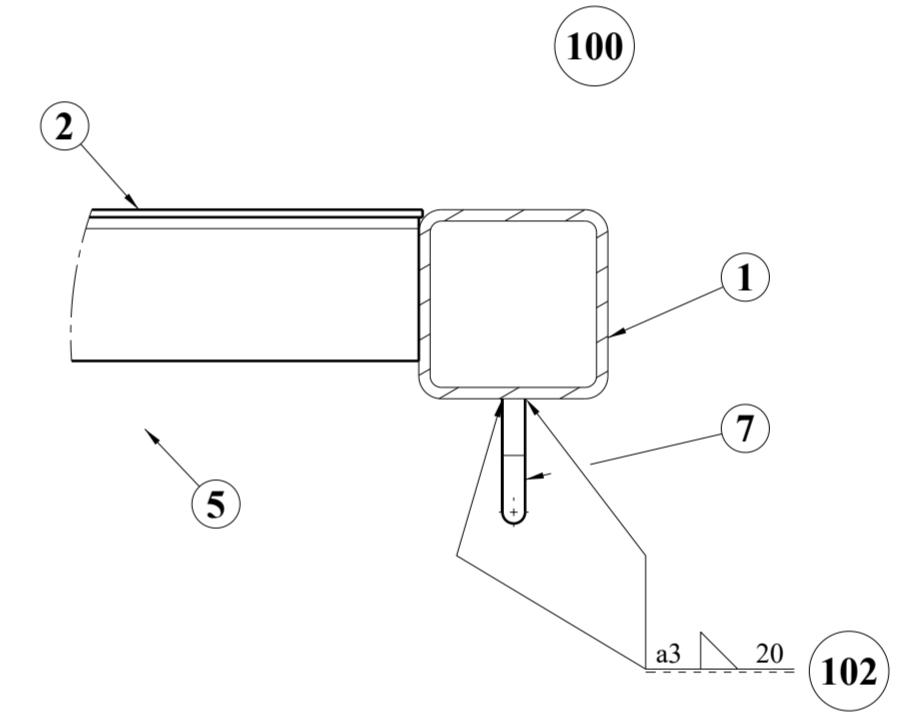
Section view A-A



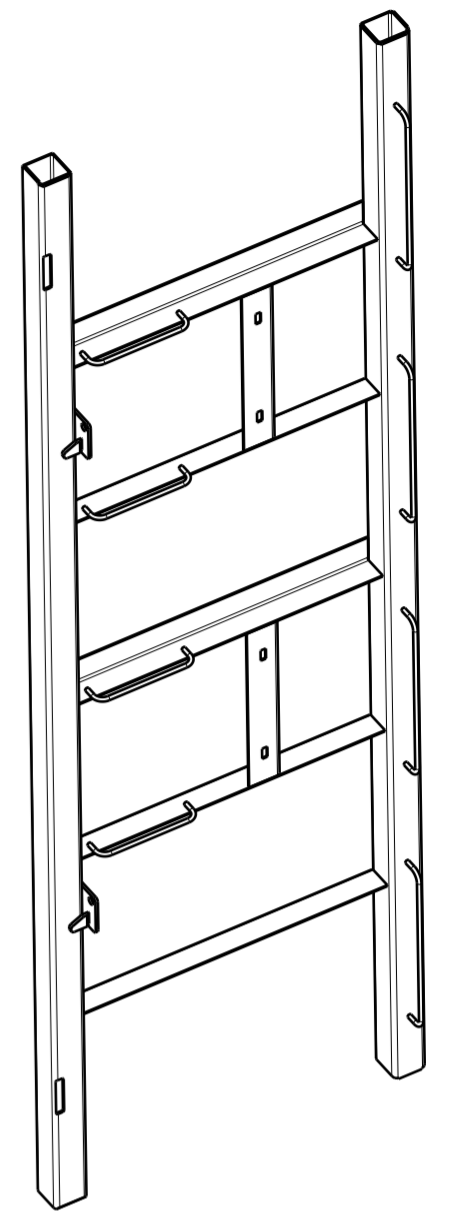
Section view B-B



Detail E  
Scale: 1:2

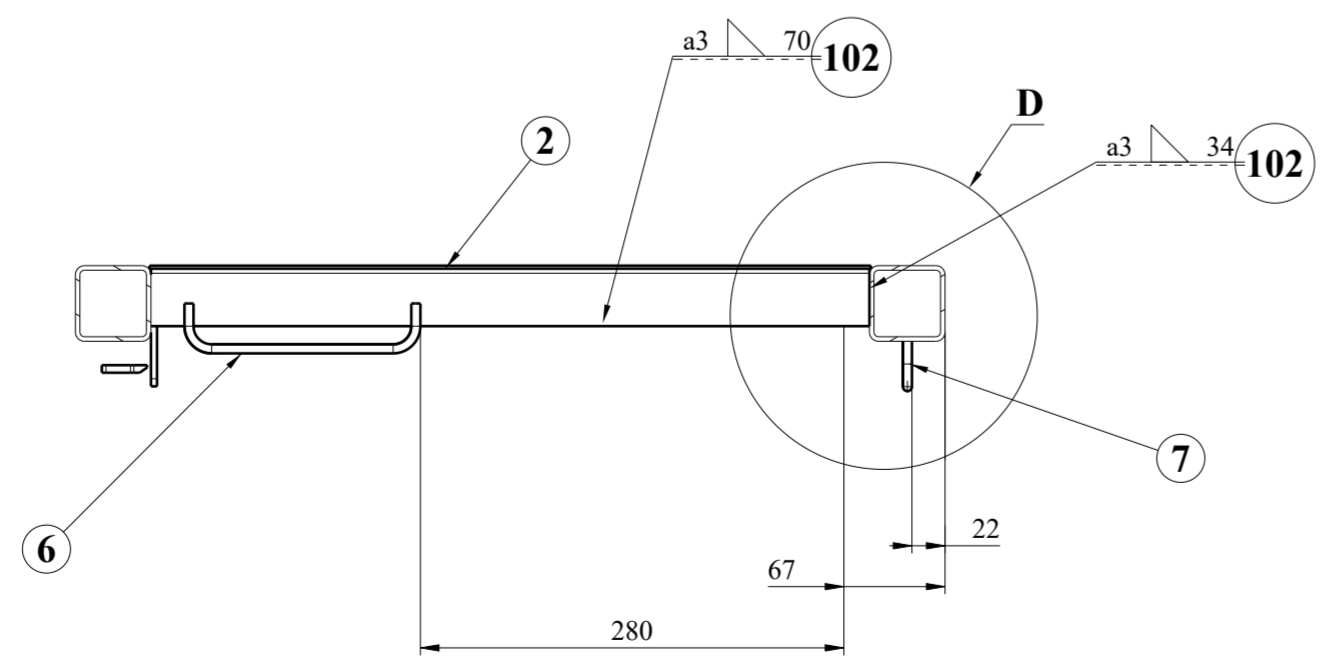


Detail D  
Scale: 1:2



Isometric view

A



Section view C-C  
Scale 1:5

NOTES:

- ELEMENTS 6 WELDED THE SAME WAY AS ELEMENT 5 IN THE DETAIL D.
- REMAINING ELEMENTS 2 AND 4 WELDED THE SAME WAY AS ELEMENT 2 IN THE DETAIL E AND SECTION VIEW C-C.

Adet	Parça Adı	Montaj No	Norm/Resim No	Malzeme	Birim Ağırlık(Kg)	Yarı Mamülün Ölçüleri/ Ürün Özellikleri
4	WIRE SUPPORT, 275 MM	7	001ME9900028-000	X5CrNi18-10	0,072kg	xx
4	WIRE SUPPORT, 150 MM	6	001ME9900013-000	X5CrNi18-10	0,044kg	xx
<del>5</del>	<del>ANGLE</del>	<del>4</del>	<del>001SC0010053-000</del>	<del>S355J2+N</del>	<del>0kg</del>	<del>xx</del>
2	ANGLE	4	001SC0010053-000	S355J2+N	0,321kg	xx
1	POST, WELDED	3	001SC0010054-000	-	0kg	xx
5	ANGLE	2	001SC0010029-000	S355J2H+N	0,569kg	xx
1	SQUARE BEAM	1	001SC0010015-000	S355J2H+N	7,819kg	xx

Bu çizim kritik kalite parametresi içerir mi? Hayır  Kritik kalite parametresi şu şekilde gösterilmiştir.  CTQ

Grup No:			Toplam Ağırlık (Kg): 2,529		TÜRASAŞ Türkiye Raylı Sistem Araçları Sanayii A.Ş. Eskişehir Bölge Müdürlüğü
Tip	Tadilat		Toleransı verilmeyen ölçüler için ilgili standartlar: EN 13920 BBF (Kaynaklı yapılar) EN 22768-1m (Uzunluk ve açış ölçüleri) EN 22768-2 K (Şekil ve Konumlar)		
E5000	Resim	K.DZIKOWSKI	13.12.2022	Onay: T.EROGLU	
	Kontrol	A.PATLAK	08.12.2022	Tarih: 15.12.2022	
	Ky Müh.	S.ÇÖKMEZ	08.12.2022		
	Kaynak Parametresi		15085-2 CL 2	CP C2 CT 3	LEFT WALL, WELDED
Ölçek	1:10	Kağıt Ebadı	A2		

No.	Weld type	Welding consumables	Weld class
102	a3 weld	EN ISO 14341-A-G 46 4	CP C2
101	3 II weld	EN ISO 14341-A-G 46 4	CP C2
100	2HY weld	EN ISO 14341-A-G 46 4	CP C2

Rev.	Description	Data	Author
B	Support removed.	29.04.2025	Ö.DAĞLI
A	Angle added and angles position updated	13.12.2022	K.Dzikowski

NOTES:

1. ELEMENTS 6 WELDED THE SAME WAY AS ELEMENT 5 IN THE DETAIL D.
2. REMAINING ELEMENTS 2 AND 4 WELDED THE SAME WAY AS ELEMENT 2 IN THE DETAIL E AND SECTION VIEW C-C.

102	a3 weld	EN ISO 14341-A-G 46 4	CP C2
101	3 II weld	EN ISO 14341-A-G 46 4	CP C2
100	2HY weld	EN ISO 14341-A-G 46 4	CP C2
No.	Weld type	Welding consumables	Weld class