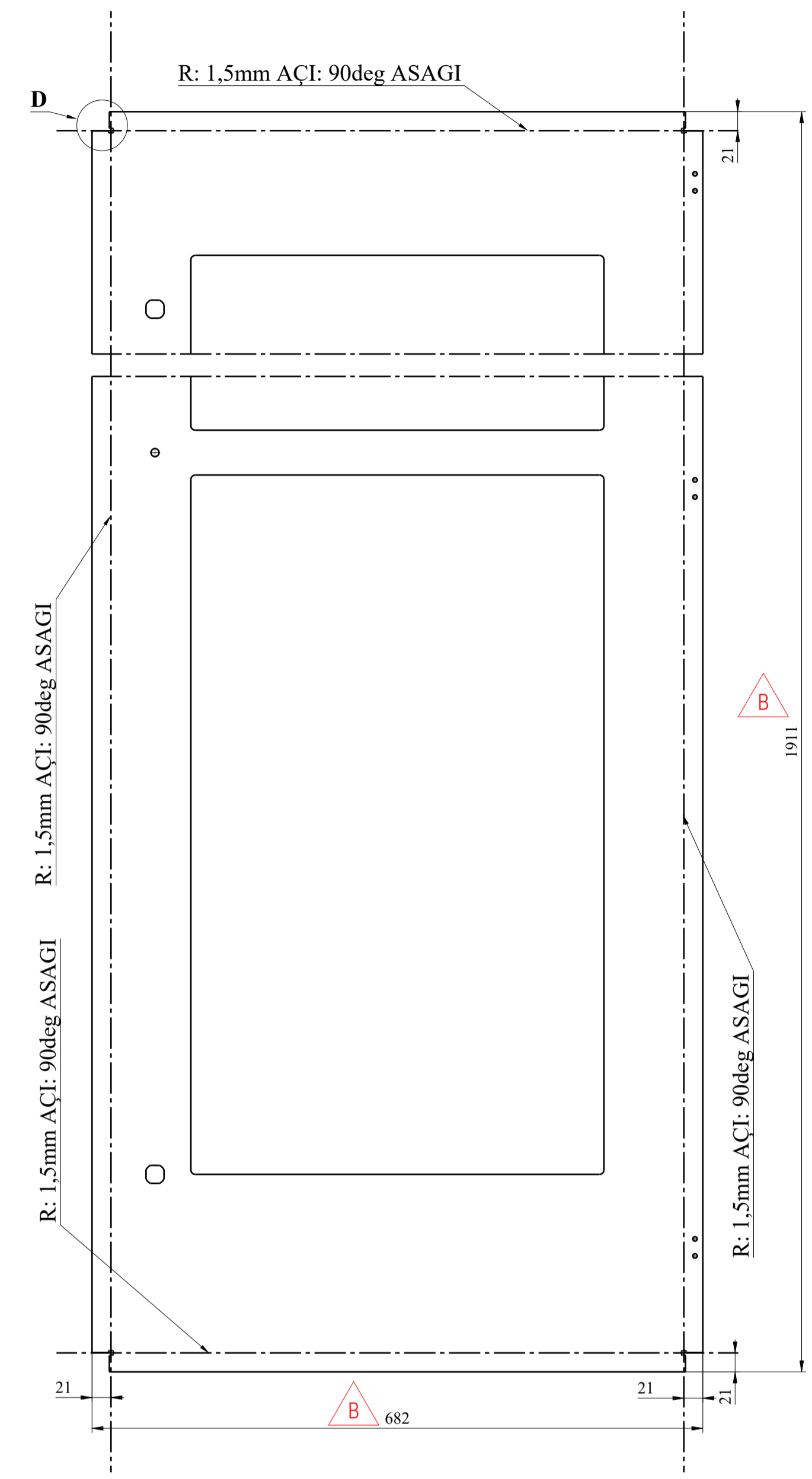
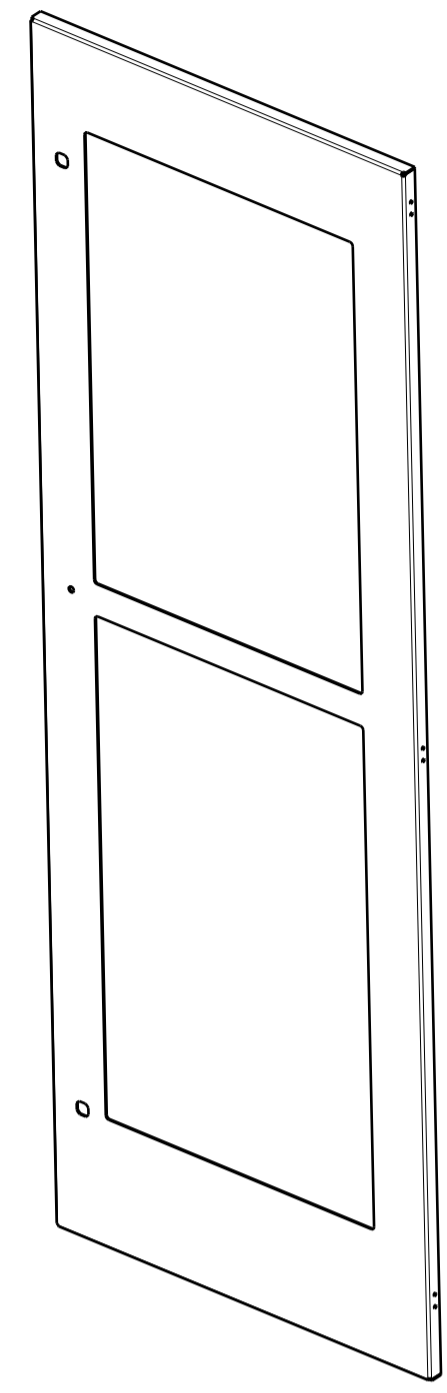


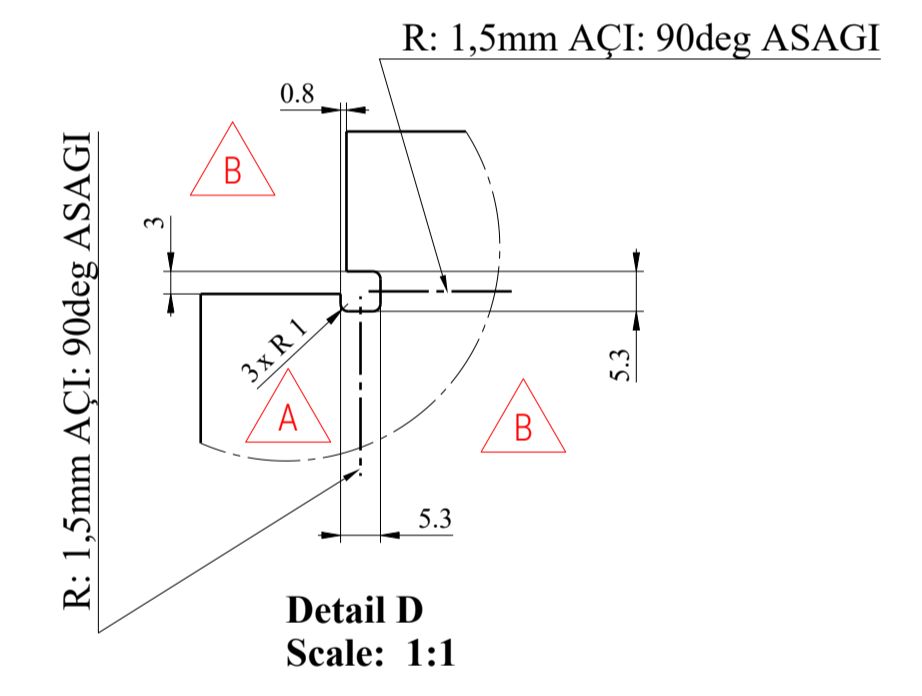
Section view C-C



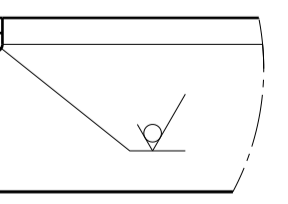
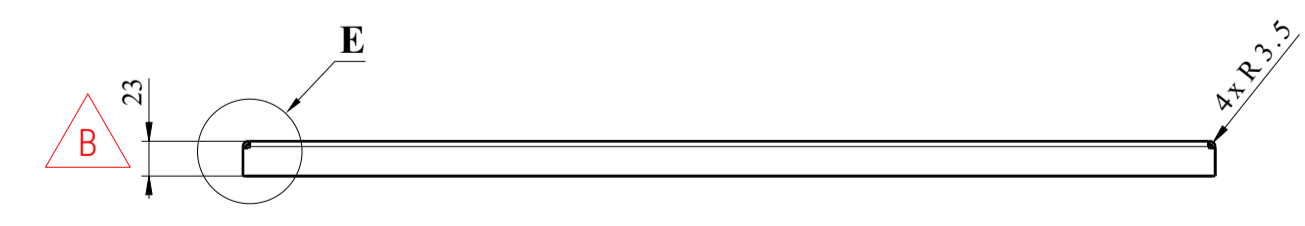
Unfolded view



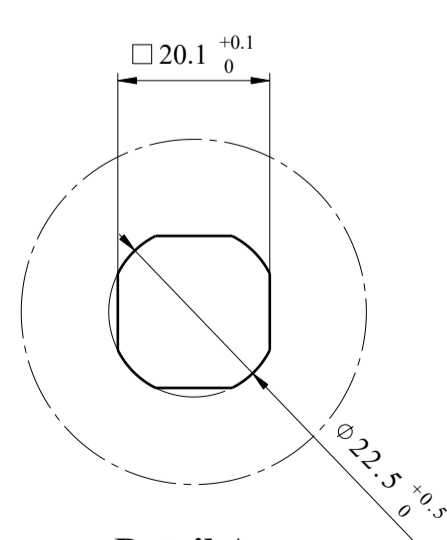
Isometric view



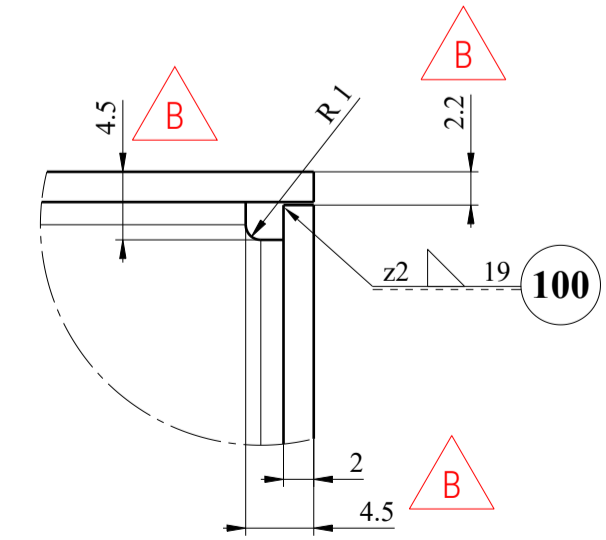
Detail D Scale: 1:1



Detail E Scale: 1:1



Detail A Scale: 1:1



Detail B Scale: 2:1

- NOTES:
1. MANUFACTURING SHALL BE DONE ACC. TO STANDARD OPERATING PROCEDURES.
  2. UNFOLDED VIEW FOR INFORMATION ONLY. ELEMENT PRODUCER IS OBLIGATE FOR KEEPING FINAL DIMENSION.
  3. PAINTING – COLOUR AND PROCESS ACC. TO MANUFACTURER'S INSTRUCTION.
  4. INTERMITTENT WELDS HAVE TO BE FILL.
  5. REMAINING CORNERS WELDED THE SAME WAY AS IN THE DETAIL B.

Thermal cutting: ISO 9013-332	+0.2 +0.5
for chamfered edges	√ Ra 12.5
General element roughness:	√ Ra 12.5 (✓)

DOOR	EN 10025-2	S355J2+N	9,717	xx	
Adet	Parça Adı	Standart No	Malzeme	Birim Ağırlık Kg	Yarı Mamülün Ölçüleri
Bu çizim kritik kalite parametresi içerir mi? Hayır					
Kritik kalite parametresi şu şekilde gösterilmiştir. <b>CTC</b>					
Grup No:	Toleransı verilmeyen ölçüler için ilgili standartlar: EN 13920 BBF (Kaynaklı yapılar) EN 22768-1m (Uzunluk ve açı ölçüleri) EN 22768-2 K (Şekil ve Konumlar)				
Tip	TÜRASAŞ Türkiye Raylı Sistem Araçları Sanayi A.Ş. Eskişehir Bölge Müdürlüğü				
Resim	K.DZIKOWSKI	13.12.2022	Onay: T.EROGLU		
Kontrol	A.PATLAK	06.08.2021	Bu yerine geçti.		
Ky Müh.	S.ÇÖKMEZ	17.08.2021	Komple Resim/Poz No		
Kaynak Parametresi	15085-2 CL.2	CP C2 CT.2	DOOR		
Ölçek	1:5	AT	001SC0010065-000		

100	z2 weld	EN ISO 14341-A-G 46.4	CP C2
No.	Weld type	Welding consumables	Weld class

B	Changed thickness	17.02.2025	K.Karnasiewicz
A	Edge fillets added	13.12.2022	K.Dzikowski
Rev.	Description	Data	Author





101	20HV weld	EN ISO 14341-A-G 46 4	CP C2
100	12HV weld	EN ISO 14341-A-G 46 4	CP C2
No.	Weld type	Welding consumables	Weld class