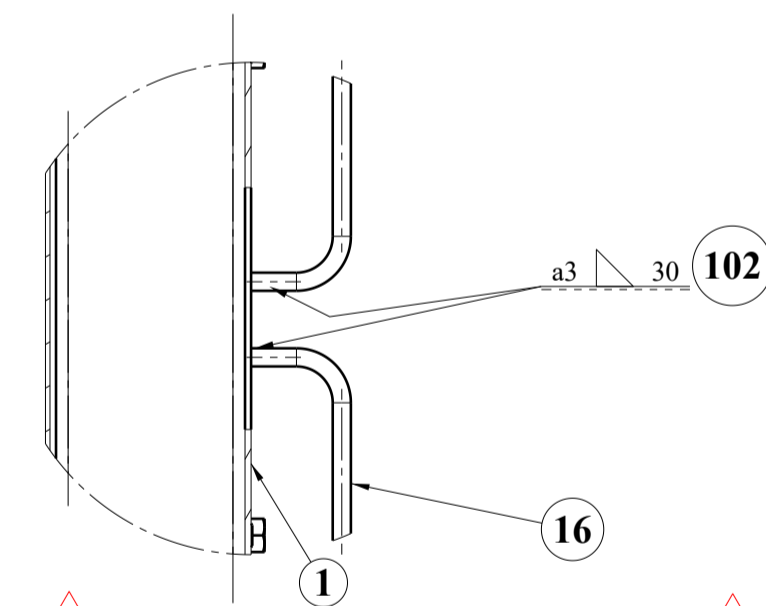
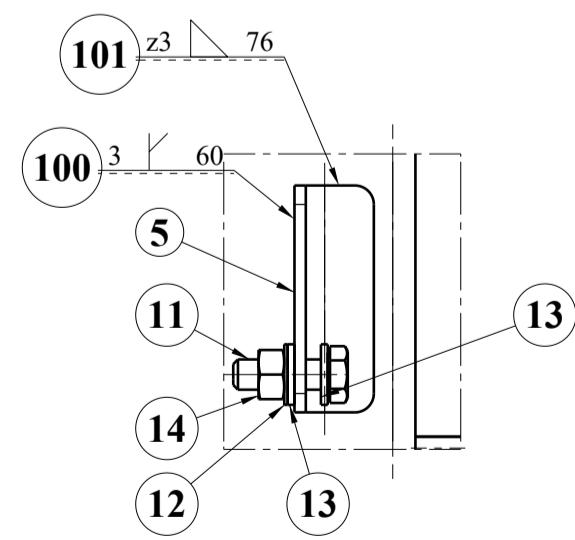


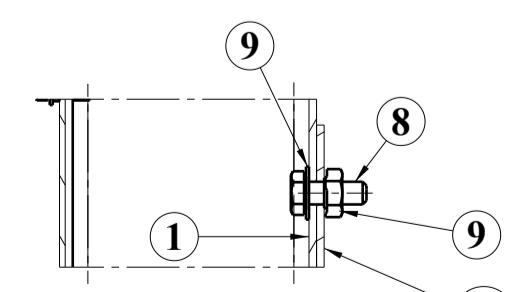
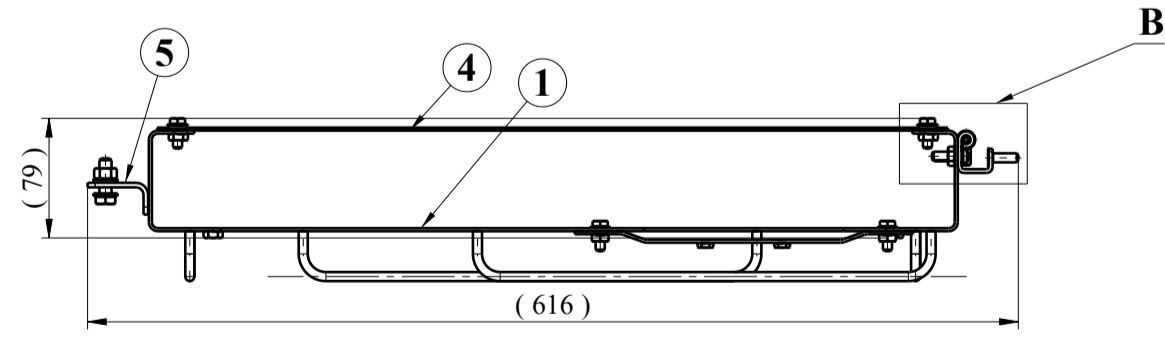
Isometric view



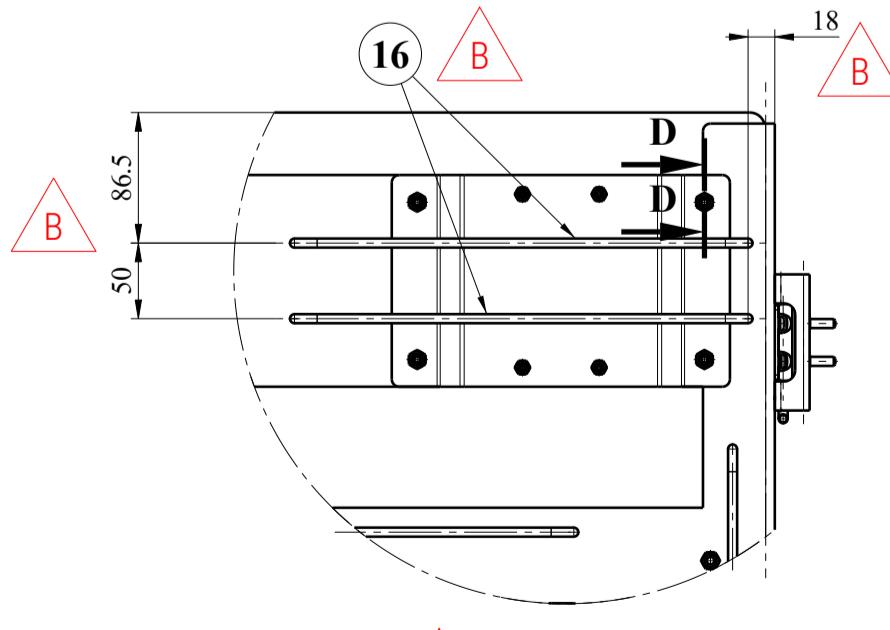
Detail F Scale: 2:5



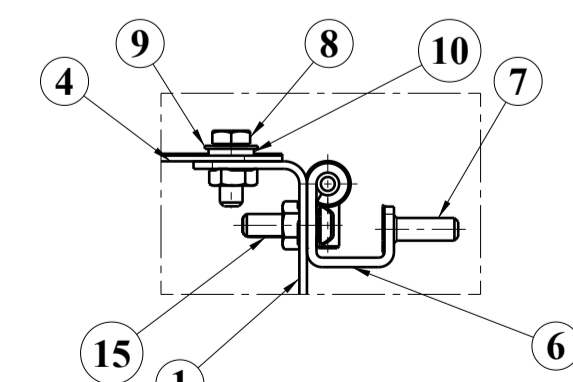
Detail A Scale: 1:2



Section view D-D Scale: 1:2



Detail C Scale: 1:5



Detail B Scale: 1:2

NOTES:

1. PAINTING – COLOUR AND PROCESS ACC. TO MANUFACTURER'S INSTRUCTION.
2. REMAINING ELEMENTS 2 WELDED THE SAME WAY AS IN THE DETAIL A.
3. REMAINING ELEMENTS 16 WELDED THE SAME WAY AS IN THE DETAIL F.

1	MOUNTING PLATE WITH NUTS, WELDED	17	001SC0010098-000	-	0kg	xx
26	WIRE SUPPORT, 300 MM	16	001ME9900020-000	S355JR	0,077kg	xx
6	BOMBE BAŞLI ALYAN (IMBUS) CIVATA	15	TN1033-0710-G-	Paslanmaz Çelik	0,006kg	M6x1 L=20
2	ALTİKÖSE NORMAL SOMUN	14	TN1015-08-BA	8	0,006kg	M8
4	DUZ RONDELA	13	TN1028-0904-AA	Çelik	0,002kg	M8
2	ÇANAK RONDELA	12	TN1102-051-AA	Yay Çeliği	0,001kg	16
2	ALTİKÖSEBAŞLI CIVATA	11	TN1002-0811-CA	8.8	0,016kg	M8x1.25 L=25
12	DUZ RONDELA	10	TN1028-0704-AA	Çelik	0,001kg	M6
16	ÇANAK RONDELA	9	TN1102-041-AA	Yay Çeliği	7,119e-004kg	14
16	ALTİKÖSE BAŞLI CIVATA	8	TN1002-0709-CA	8.8	0,006kg	M6x1 L=16
6	HAVŞA BAŞLI ALYAN (IMBUS) CIVATA	7	TN1004-0710-CA	8.8	0,006kg	M6x1 L=20
3	PIMLI MENTEŞE	6	TB2779	-	0kg	-
2	BRACKET	5	001SC0010081-000	S355J2+N	0,07kg	xx
1	PLATE	4	001SC0010079-000	S235JR	2,51kg	xx
1	PLATE	3	001SC0010078-000	S235JR	2,226kg	xx
1	PLATE	2	001SC0010077-000	S235JR	2,51kg	xx
1	WALL	1	001SC0010076-000	-	0kg	xx
Adet	Parça Adı	Montaj No	Norm/Resim No	Malzeme	Birim Ağırlık(Kg)	Yarı Mamülün Ölçüleri/ Ürün Özellikleri

Bu çizim kritik kalite parametresi içerir mi? Hayır		Kritik kalite parametresi şu şekilde gösterilmiştir. CTC	
Grup No:		Toplam Ağırlık (Kg): 2,834	TÜRASAŞ
Tip:		Tolerans verilmeyen ölçüler için ilgili standartlar: EN 13020 B88 (Kaynaklı yapılar) EN 22768-1m (Uzunluk ve açılı ölçüler) EN 22768-2 K (Şekil ve Konumlar)	Türkiye Raylı Sistem Araçları Sanayii A.Ş. Eskişehir Bölge Müdürlüğü
Tadilat:	C UPDATED	10.04.2025 A.PATLAK	
Resim:	K.DZIKOWSKI	12.12.2022	Onay: T.EROGU
Kontrol:	A.PATLAK	09.09.2021	Tarih: 16.09.2021
Ky Müh.:	S.ÇÖKMEZ	09.09.2021	
Kaynak Parametresi:	15085-2 CL.2	CP C2 CT 3	
Ölçek:	1:5	Skala: 1:5	FUSES WALL
Rev.	Description	Date	Author
C	General update	10.04.2025	K.Karnasiewicz
B	Changed quantity of pos. 16	14.02.2025	K.Karnasiewicz
A	Added mounting equipment, structure of the model changed	17.08.2022	K.Dzikowski

No.	Weld type	Welding consumables	Weld class
102	a3 weld	EN ISO 14341-A-G 46 4	CP C2
101	z3 weld	EN ISO 14341-A-G 46 4	CP C2
100	3HY weld	EN ISO 14341-A-G 46 4	CP C2



C	General update	10.04.2025	K.Karnasiewicz
B	Changed quantity of pos. 16	14.02.2025	K.Karnasiewicz
A	Added mounting equipment, structure of the model changed	17.08.2022	K.Dzikowski
Rev.	Description	Date	Author