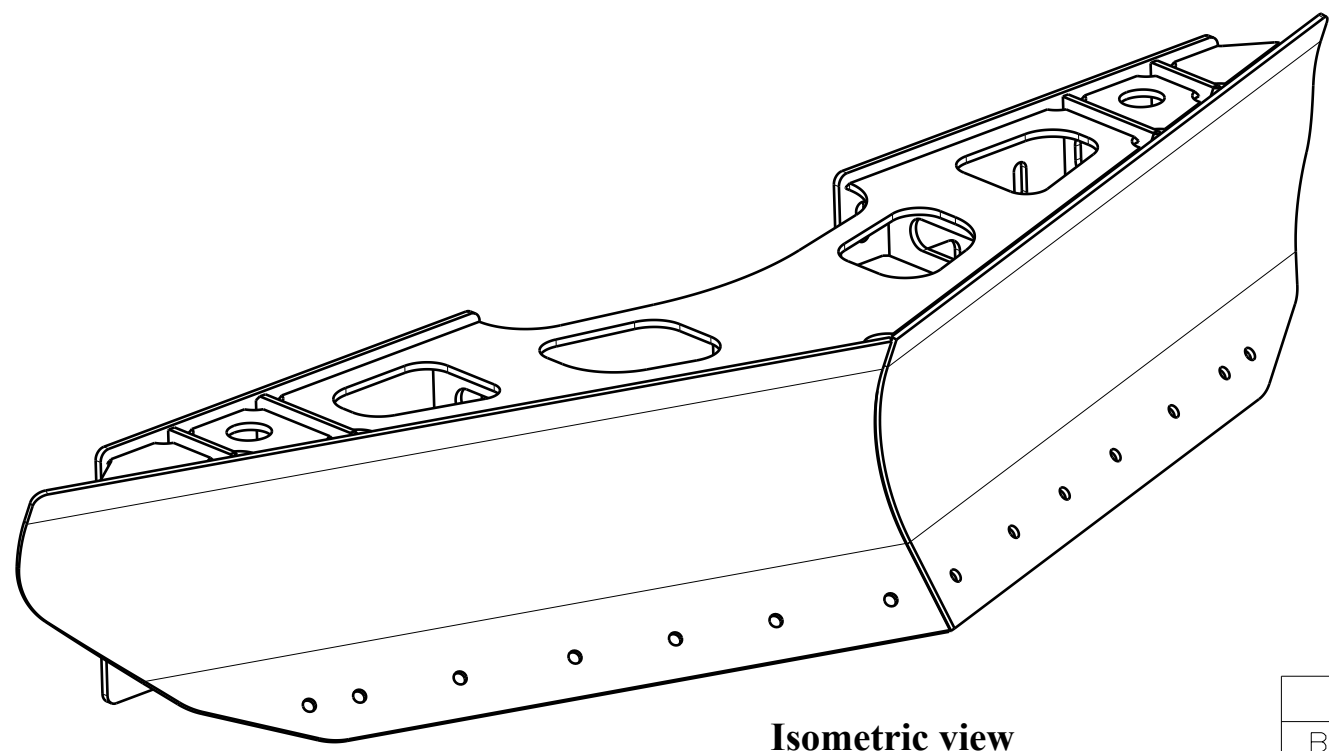
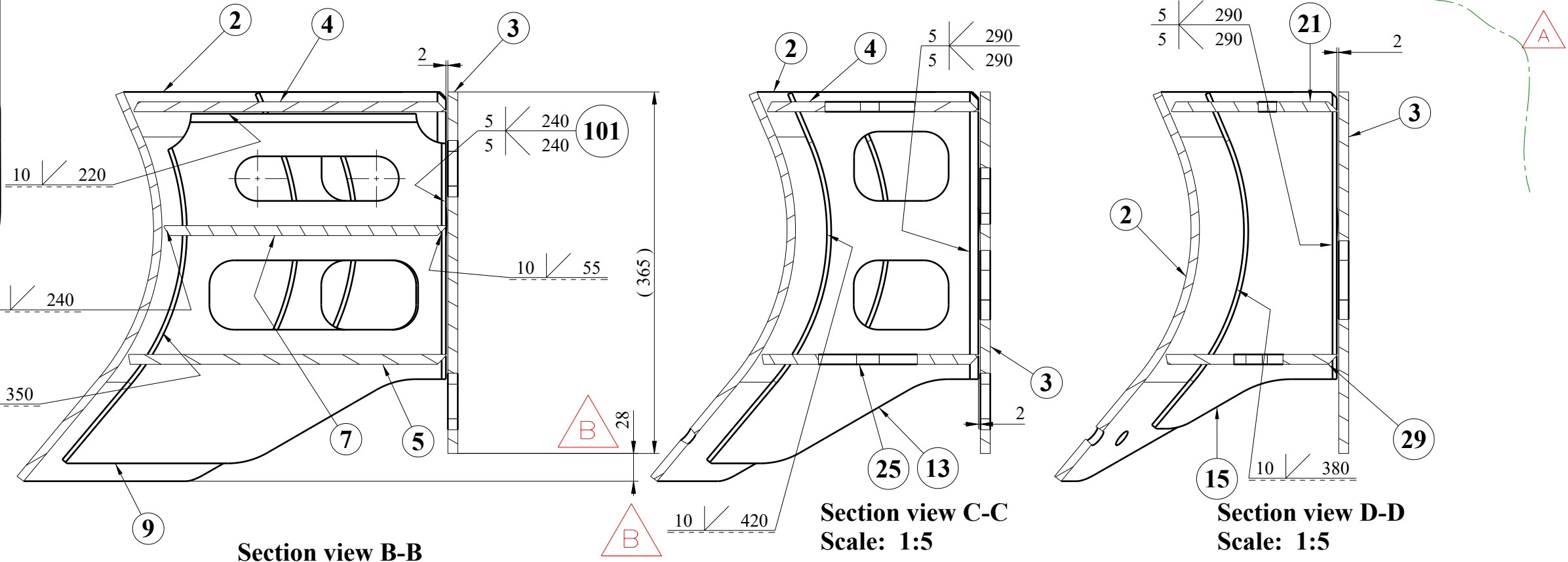


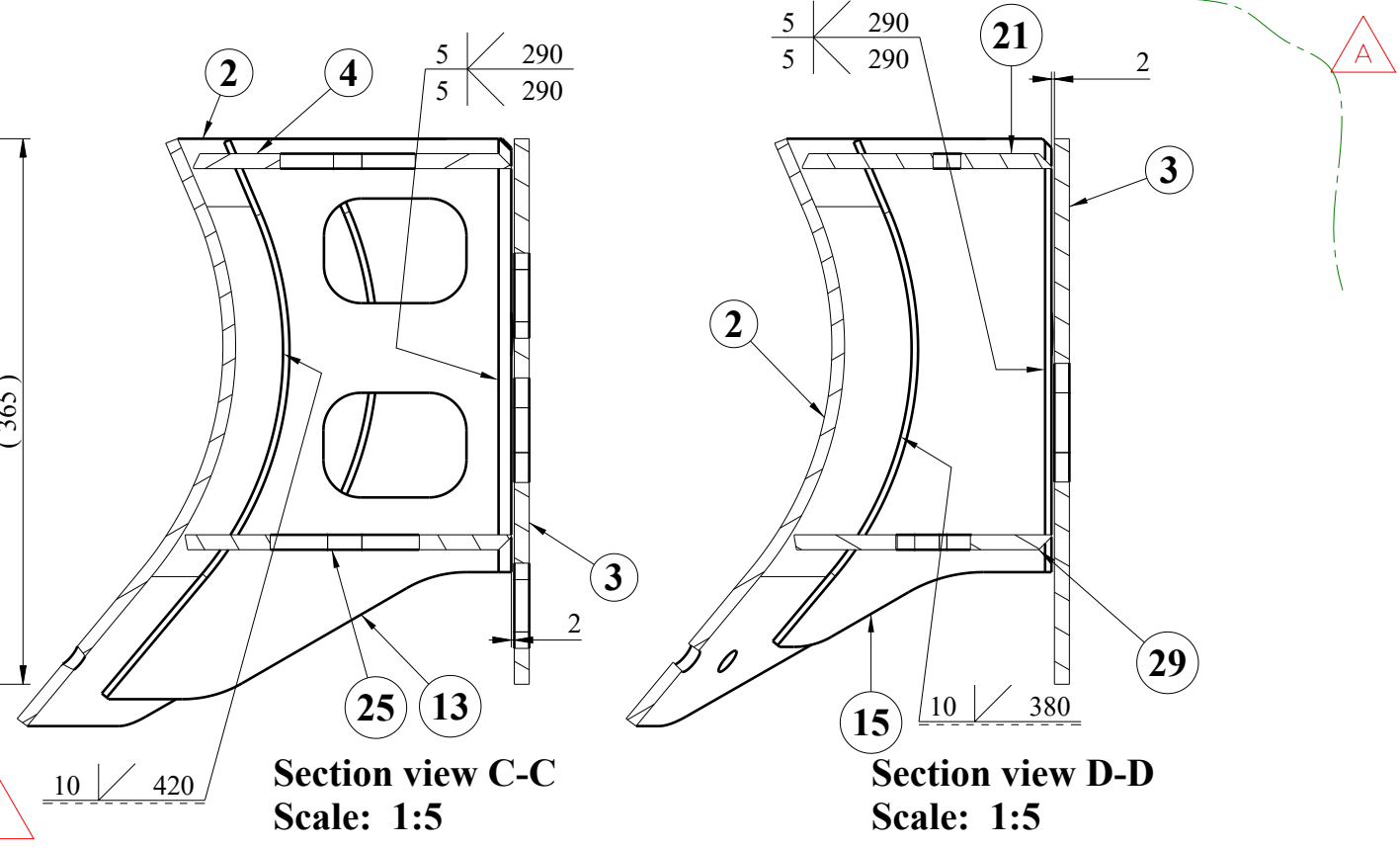
10	8V weld	EN ISO 14341-A-G 46 4	CP C2
2			
10	D5HV weld	EN ISO 14341-A-G 46 4	CP C2
1			
10	10HV weld	EN ISO 14341-A-G 46 4	CP C2
0			
No.	Weld type	Welding consumables	Weld class



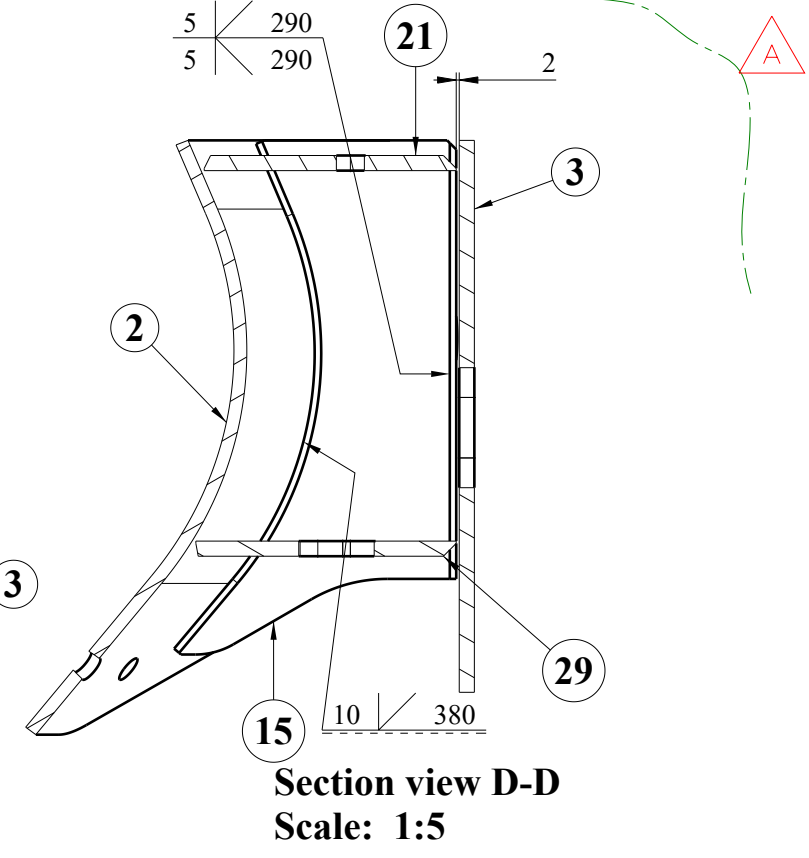
Isometric view



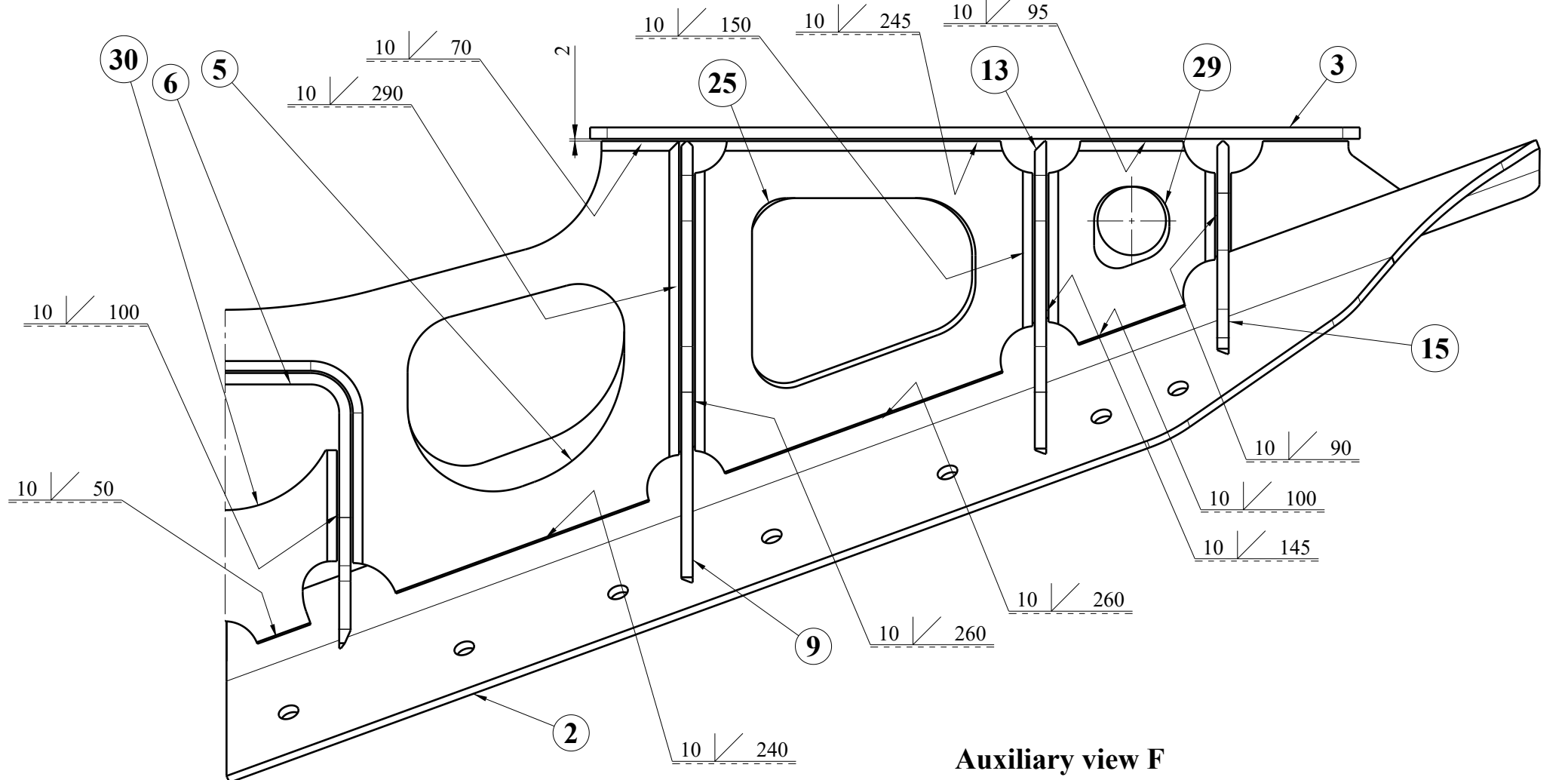
Section view B-B
Scale: 1:5



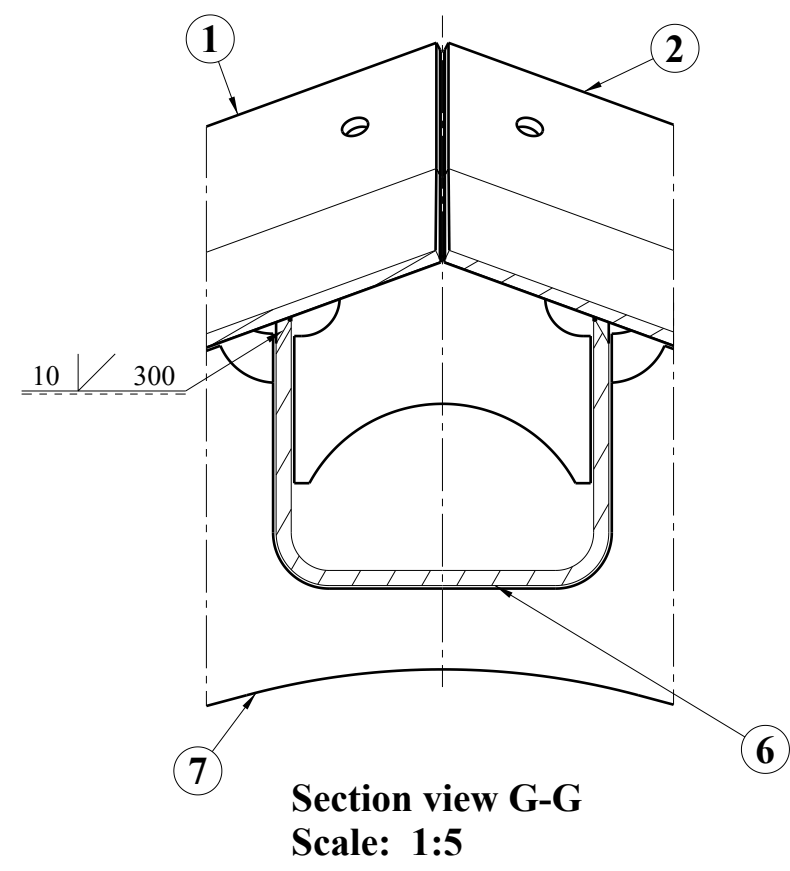
Section view C-C
Scale: 1:5



Section view D-D
Scale: 1:5



Auxiliary view F



Section view G-G
Scale: 1:5

NOTES:

1. PAINTING – COLOUR AND PROCESS ACC. TO MANUFACTURER'S INSTRUCTION.
2. WELD SYMMETRICAL ELEMENTS IN THE SAME WAY.

1	SHEET	30	001MU0120031-000	S355J2	1,615kg	xx
1	SHEET	29	001MU0120030-000	S355J2	1,264kg	xx
1	SHEET	28	001MU0120029-000	S355J2	1,264kg	xx
-	-	27	-	-	0kg	-
-	-	26	-	-	0kg	-
1	SHEET	25	001MU0120026-000	S355J2	3,252kg	xx
1	SHEET	24	001MU0120025-000	S355J2	3,252kg	xx
1	SHEET	23	001MU0120024-000	S355J2	0,926kg	xx
1	SHEET	22	001MU0120023-000	S355J2	0,926kg	xx
1	SHEET	21	001MU0120022-000	S355J2	1,284kg	xx
1	SHEET	20	001MU0120021-000	S355J2	1,284kg	xx
-	-	19	-	-	0kg	-
-	-	18	-	-	0kg	-
-	-	17	-	-	0kg	-
-	-	16	-	-	0kg	-
1	SHEET	15	001MU0120016-000	S355J2	2,598kg	xx
1	SHEET	14	001MU0120015-000	S355J2	2,598kg	xx
1	SHEET	13	001MU0120014-000	S355J2	3,494kg	xx
1	SHEET	12	001MU0120013-000	S355J2	3,494kg	xx
-	-	11	-	-	0kg	-
-	-	10	-	-	0kg	-
1	SHEET	9	001MU0120010-000	S355J2	5,46kg	xx
1	SHEET	8	001MU0120009-000	S355J2	5,46kg	xx
1	SHEET	7	001MU0120008-000	S355J2	7,785kg	xx
1	SHEET	6	001MU0120007-000	S355J2	11,034kg	xx
1	SHEET	5	001MU0120006-000	S355J2	8,786kg	xx
1	SHEET	4	001MU0120005-000	S355J2	19,76kg	xx
2	SHEET	3	001MU0120004-000	S355J2	17,164kg	xx
1	SHEET	2	001MU0120003-000	S355J2	30,718kg	xx
1	SHEET	1	001MU0120002-000	S355J2	30,718kg	xx
Adet	Parça Adı	Montaj No	Norm/Resim No	Malzeme	Birim Ağırlık(Kg)	Yarı Mamülün Ölçüleri/ Ürün Özellikleri

Bu çizim kritik kalite parametresi içerir mi?Hayır

Kritik kalite parametresi şu şekilde gösterilmiştir. CTQ

Grup No:	Toplam Ağırlık (Kg): 181.300	TÜRASAS
Tip	Tolerans verilmeyen ölçüler için ilgili standartlar: EN 13920 B8F (Kaynaklı yapılar) EN 22768-1m (Uzunluk ve açılar) EN 22768-2 K (Şekil ve konumlar)	Türkiye Raylı Sistem Araçları Sanayi A.Ş. Eskişehir Bölge Müdürlüğü
Tadilat	B UPDATED 06.06.2025 A.PATLAK	den proje yerine geçti.
Resim	T.SUWAJ 28.07.2021	Onay: T.EROGLU
Kontrol	M.AKÇA 04.08.2021	Tarih: 11.08.2021
Ky Müh.	S.ÇÖKMEZ 04.08.2021	
Kaynak Parametresi	15085-2 CL 2 CP C2 CT 3	OBSTACLE DEFLECTOR, WELDED
Ölçek	1:5	

B	GENERAL UPDATE	06.06.2025	K.KARNASIEWICZ
A	GENERAL UPDATE	28.04.2025	K.KARNASIEWICZ
Rev	Description	Date	Author