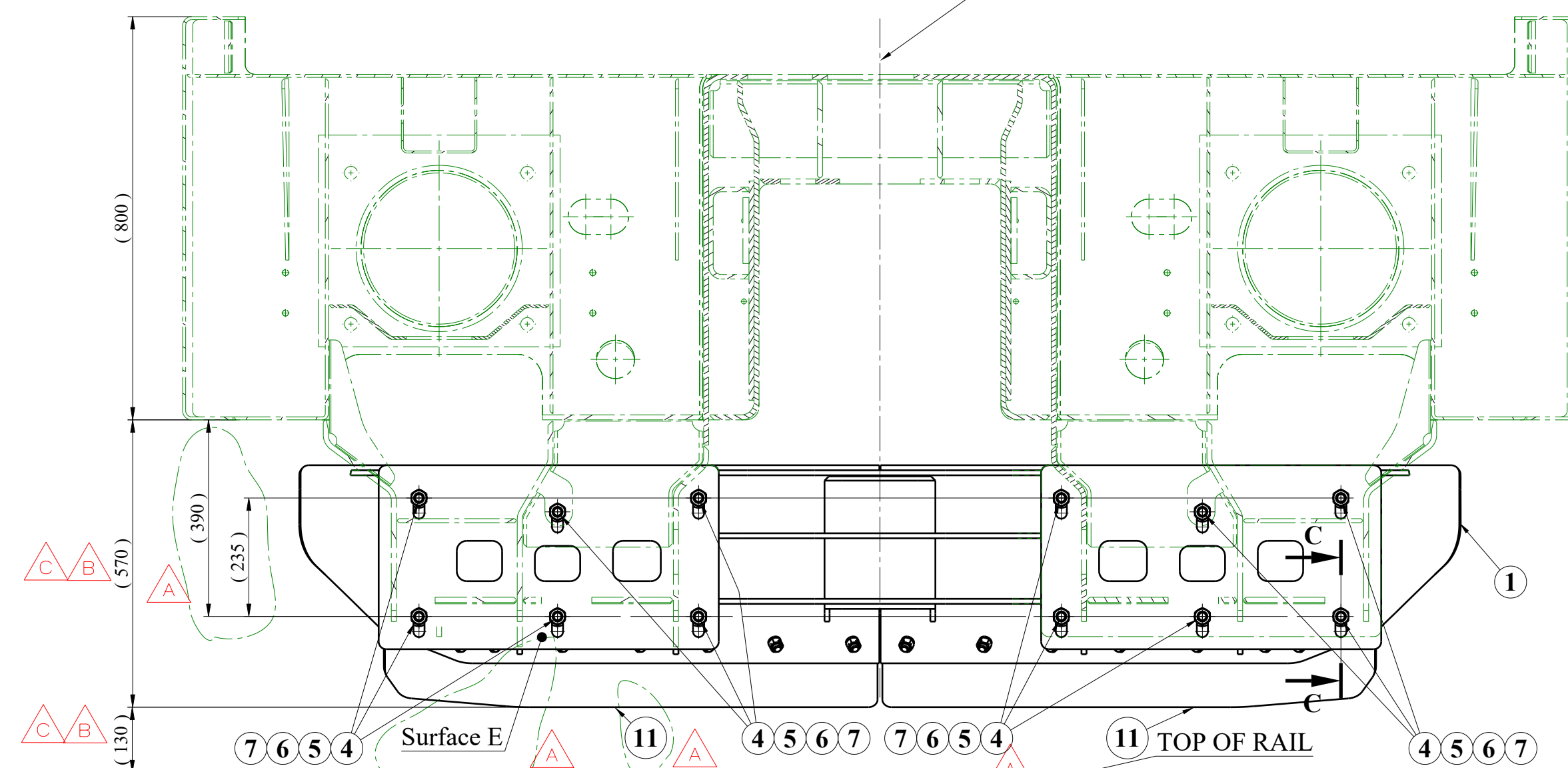

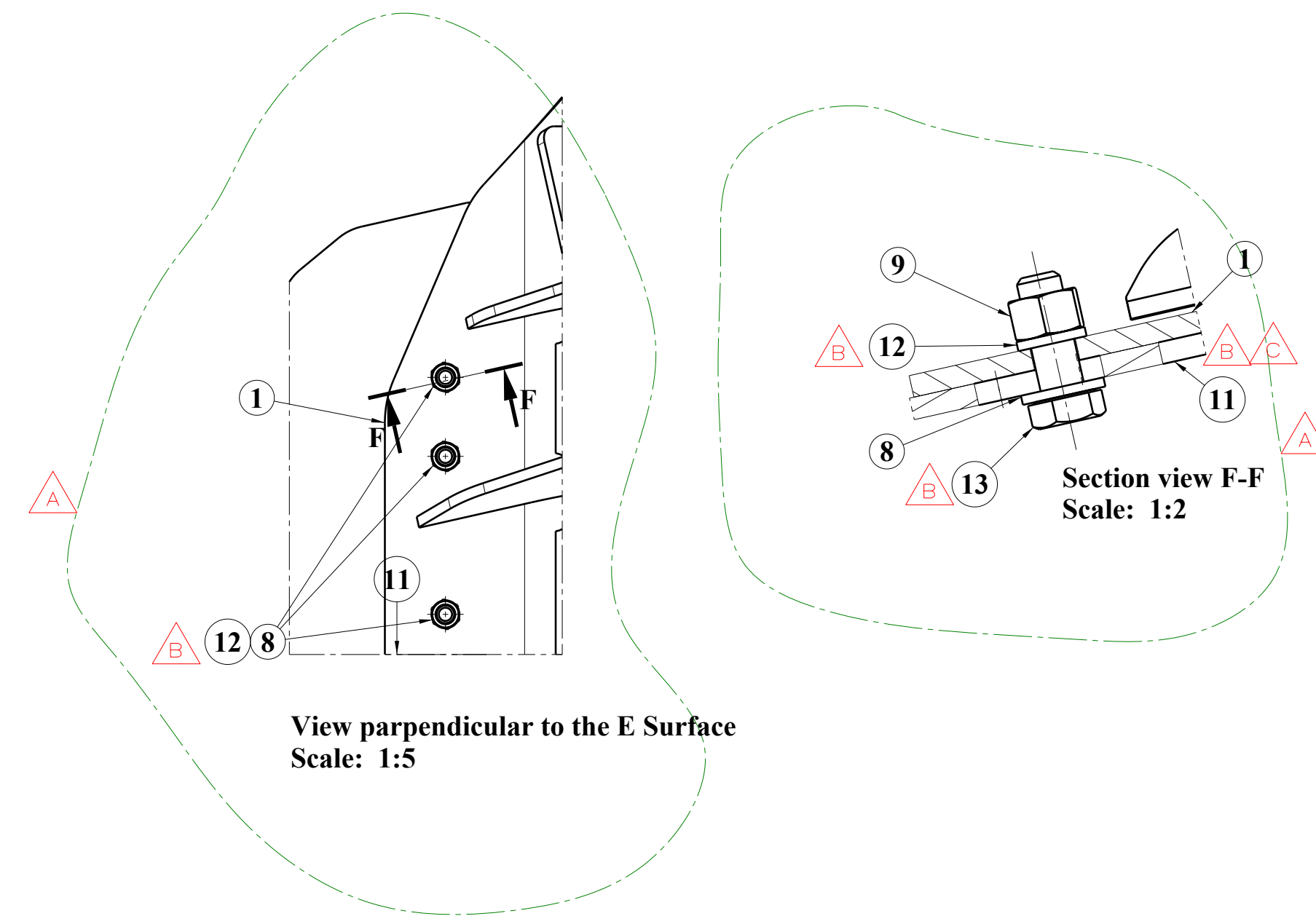


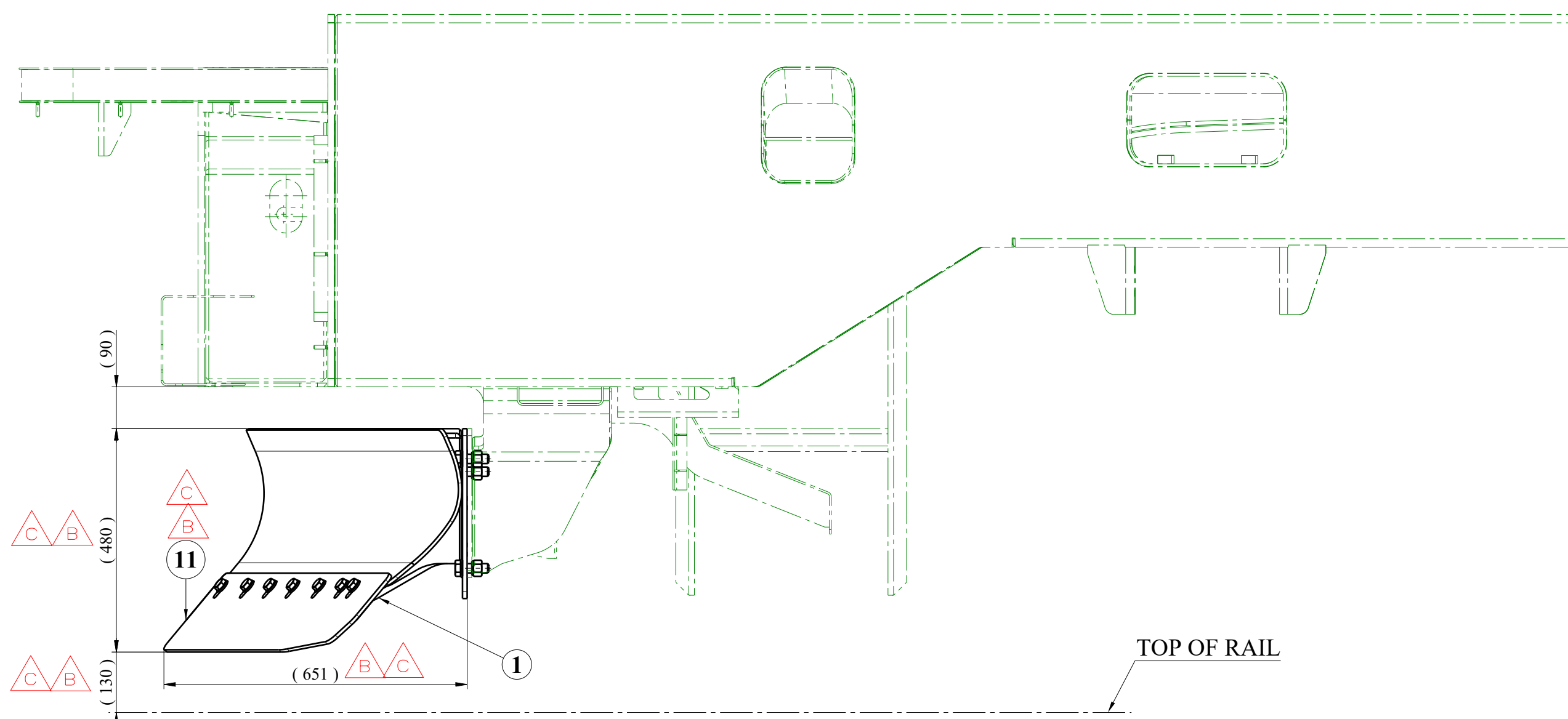
**Detail A**  
**Scale: 1:10**



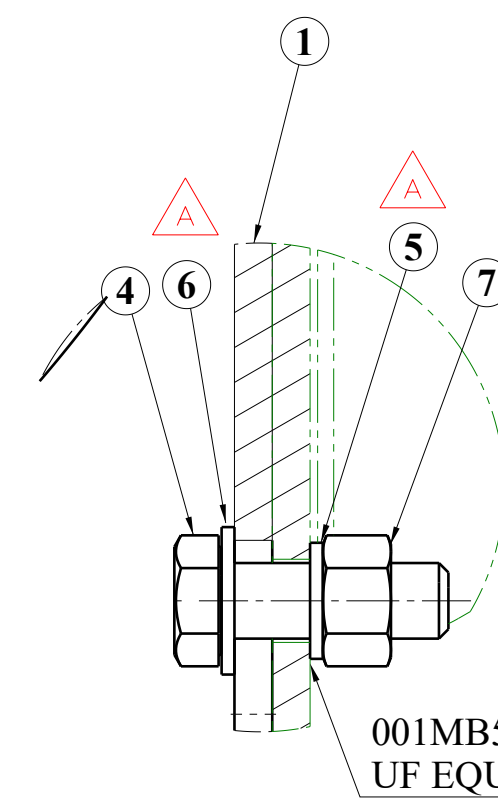
**Section view B-B**   
**Scale: 1:10**



**Section view**  
**Scale: 1:2**



**Auxiliary view D**  
**Scale: 1:10**



**Section view C-C**  
**Scale: 1:2**

NOTES:

1. ALL THREADED CONNECTIONS HAVE TO BE SECURED BY GLUE POS. 10
2. ALL THREADED CONNECTIONS HAVE TO BE MARKED

|      |                            |           |                  |           |                   |  |
|------|----------------------------|-----------|------------------|-----------|-------------------|--|
| 14   | ALTIKOSEBASLI CIVATA       | 13        | TN1002-1815-CA   | 8.8       | 0,109kg           | M16x2 L=45                               |
| 14   | KILITLEME RONDELASI        | 12        | TB2753-25        | EN 1.7182 | 0,007kg           | M16                                      |
| 2    | SHEET                      | 11        | 001MU0120033-00  | S355J2    | 22,9kg            | xx                                       |
| 1    | LOCITTE 243                | 10        | 001GE9900001-000 | GLUE      | 0kg               | ENOUGH                                   |
| 14   | ALTIKOSE NORMAL SOMUN      | 9         | TN1015-12-BA     | 8         | 0,038kg           | M16                                      |
| 14   | KILITLEME RONDELASI        | 8         | TB2753-26        | EN 1.7182 | 0,014kg           | M16                                      |
| 12   | ALTIKOSE NORMAL SOMUN      | 7         | TN1015-14-BA     | 8         | 0,076kg           | M20                                      |
| 12   | KILITLEME RONDELASI        | 6         | TB2753-32        | EN 1.7182 | 0,022kg           | M20                                      |
| 12   | KILITLEME RONDELASI        | 5         | TB2753-31        | EN 1.7182 | 0,015kg           | M20                                      |
| 12   | ALTIKOSEBASLI CIVATA       | 4         | TN1002-2318-CA   | 8.8       | 0,222kg           | M20x2,5 L=60                             |
| -    | -                          | 3         | -                | -         | 9,674kg           | -  |
| -    | -                          | 2         | -                | -         | 9,674kg           | -  |
| 1    | OBSTACLE DEFLECTOR, WELDED | 1         | 001MU0120001-000 | -         | 171,944kg         | xx                                       |
| Adet | Parça Adı                  | Montaj No | Norm/Resim No    | Malzeme   | Birim Ağırlık(Kg) | Yarı Mamülün Ölçütleri/ Ürün Özellikleri |

|      |                        |             |             |                       |
|------|------------------------|-------------|-------------|-----------------------|
| 4    | TBD                    | —           | Loctite 243 | see Note              |
| 2    | TBD                    | —           | Loctite 243 | see Note              |
| Pos. | Tightening torque [Nm] | Lubrication | Bonding     | Assembly instructions |

|      |   |            |                                |   |       |   |                   |  |  |  |  |
|------|---|------------|--------------------------------|---|-------|---|-------------------|--|--|--|--|
| C    | UPDATED POS.11                              | 03.07.2025 |                                | Bu çizim kritik kalite parametresi içerir mi?Hayır                    |       |   |                   | Kritik kalite parametresi şu şekilde gösterilmiştir. <b>CTC</b>                            |  |  |  |
| B    | REMOVED POS. 2, 3.<br>ADDED POS. 11, 12, 13 | 06.06.2025 | K.KARNASIEW<br>ICZ             | Grup No: _____<br>Tip: _____<br>Tarih: _____<br>C: UPDATED 03.07.2025 |       | Toplam Ağırlık (Kg): 207,535<br>Tolerans verilmeyen ölçüler için ilgili standartlar:<br>EN 15200 B8F (Kaynaklı yapılar)<br>EN 22768-1m (Uzunluk ve açılı ölçüler)<br>EN 22768-2 K (Sekil ve Konumlar) |                   | <b>TÜRSAS</b><br>Türkiye Raylı Sistem<br>Araçları Sanayi A.Ş.<br>Eskişehir Bölge Müdürlüğü |  |  |  |
| A    | NEW ASSEMBLIES                              | 29.04.2025 | T.SUWAJ,<br>K.KARNASIEW<br>ICZ | <b>E5000</b>  | Resim | T.SUWAJ   | 28.07.2021        | Onay: T.EROGLU   |  |  |  |
|      |   |            | Kontrol                        |   | MAKÇA | 04.08.2021  | Tarih: 11.08.2021 |  |  |  |  |
|      |   |            | Ky Müh.                        |   |       |   |                   |  |  |  |  |
| Rev. | Description                                 | Data       | Author                         | Kaynak Parametresi: _____   |       | Kağıt Ebadı: A1   |                   | <b>INSTALLATION,<br/>OBSTACLE DEFLECTOR</b>  |  |  |  |
|      |   |            |                                | Ölçek   | 1:25  |   |                   | <b>001MU0120000-000</b>  |  |  |  |
| F    |   | E          |                                | D   |       | C   |                   | B  |  |  |  |
|      |   |            |                                |   |       |   |                   |  |  |  |  |