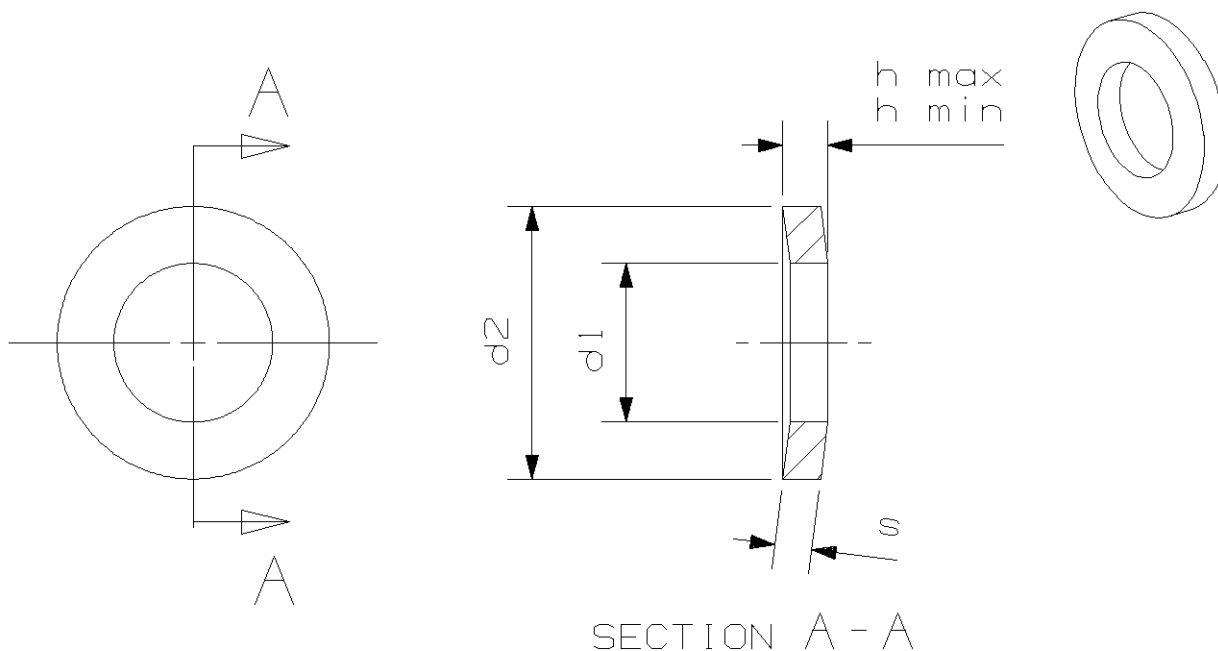


THIS DRAWING, WHICH CONTAINS PROPRIETARY INFORMATION, IS THE PROPERTY OF GENERAL ELECTRIC COMPANY. IT SHALL NOT BE REPRODUCED IN ANY MANNER NOR DISCLOSED TO THIRD PARTIES WITHOUT WRITTEN PERMISSION OF GENERAL ELECTRIC COMPANY.

REV	DATE	DRAFTER ENGINEER	RIN#, IN# DESCRIPTION
A	3/13/2009	RAJEEV K MN VALLISH	CO-119977 P3, P4 ADDED
B	4/16/2009	RAJEEV K MN VALLISH	CO-121123 IN-1



PART NO	SIZE (NOMINAL) [MM]	d1 H14 [MM]	d2 h14 [MM]	s [MM]	h MAX [MM]	h MIN [MM]	WEIGHT (7.85 KG/d³) [KG]	VENDOR NAME	VENDOR PART NO
P1	20	21	36	5	5.95	5.3	.025	SCHNORR	435320
P2	16	17	30	4	4.95	4.31	.014	SCHNORR	430900
P3	12	13	24	3	3.75	3.27	.071	SCHNORR	426400
P4	10	10.5	21	2.5	3.15	2.75	.049	SCHNORR	423220

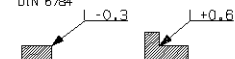
UNLESS OTHERWISE SPECIFIED

APPLIED PRACTICES:-GEOMETRIC (ISO&T) TOLERANCES PER ISO 8015

-GENERAL MACHINING TOLERANCES PER ISO 2768-mK

-SURFACE TEXTURE PER DIN-ISO 1302 WITH Rz PER DIN 4762

-CORNERS PER DIN 6754



-DIMENSION TOLERANCES PER DIN-ISO 286

MAT'L = SPRING STEEL TO DIN 17221 OR 17222

DIMENSIONS ARE IN MM

CRITICAL TO QUALITY CHARACTERISTICS MARKED THUS: \ominus

P4	A
P3	B
P2	O
P1	O
PART OR GROUP	CURRENT REVISION

DRAFTING QUALITY PROCEDURES AND CHECKLIST

DOES THIS DRAWING CONTAIN CRITICAL INTERFACE DIMENSIONS? NO

SIGNATURES	DATE
DRAWN SHARANU.N	02/23/09
ISSUED SHARANU.N	02/23/09
ENGRG MN,VALLISH	03/11/08
PRINTS TO	
PLAN REF: 84A22549	
FCF: 84E904493	
SURFACES: SEE ABOVE	✓



GE TRANSPORTATION SYSTEMS

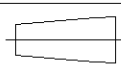
ERIE, PA

TITLE

BELLEVILLE WASHER

FIRST MADE FOR PH37ACm i

CO-119660



DWG NO

84A224648

SCALE 1.00

CONT SHEET ON F SH NO 1