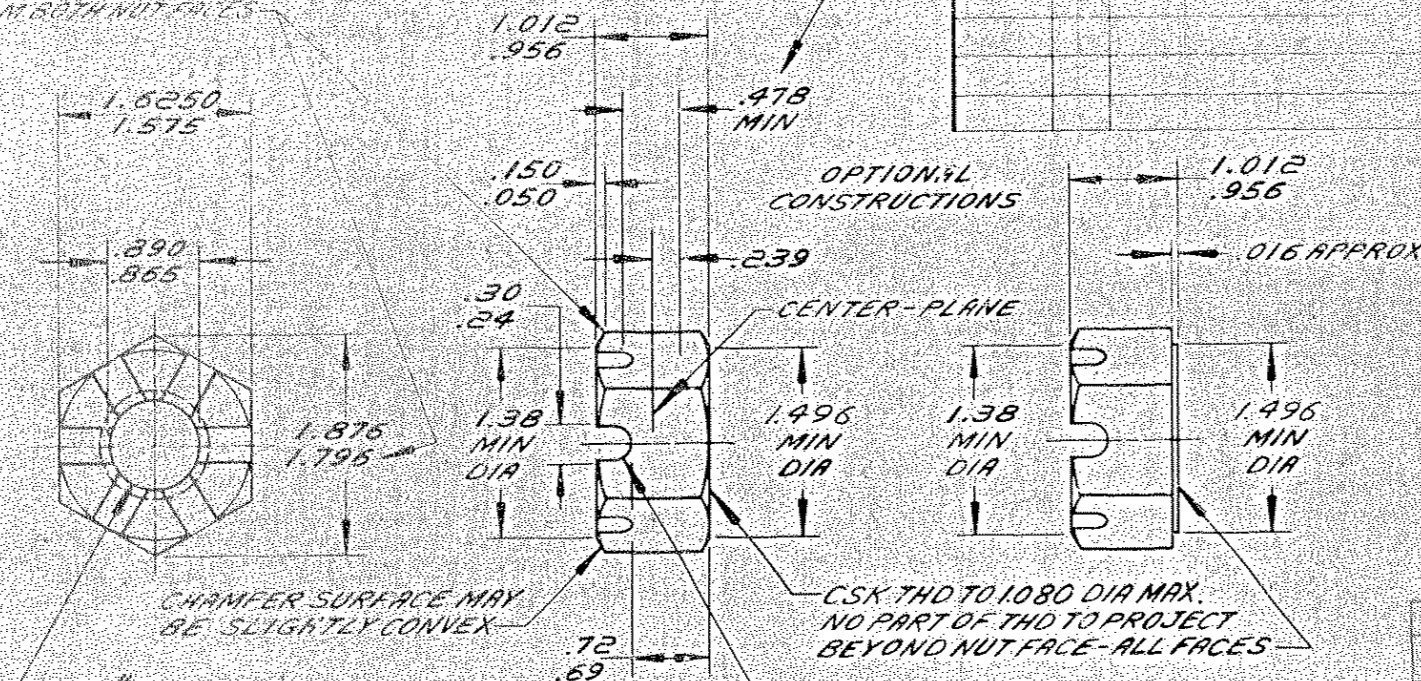


ENGINEERING STANDARDS SECTION

GENERAL MOTORS CORPORATION - G. M. TECHNICAL CENTER - WARREN, MICHIGAN

ALL DIMENSIONS MUST BE TO UNLESS OTHERWISE SPECIFIED
CHAMFER WITH 45 DEGREE CORNERS
IS PERMISSIBLE. ACROSS CORNERS
MUST BE AT OR ABOVE MIN. LIMIT
BETWEEN PLANES LOCATED .175
FROM BOTH NUT FACES

ALL CROSS FLATS MUST
BE AT OR ABOVE MIN.
LIMIT OVER THIS
DISTANCE



218504

DATE	SYM	REVISION RECORD	AUTHORITY	DR	CHK
25JUL80	D	REDRAWN & REVISED			

Yr No	Slr No
1718	399

NOTE:
UNSPECIFIED DETAIL WITH RESPECT TO DIMENSIONS, MATERIAL, METHODS OF TEST, ETC., MUST CONFORM TO GENERAL SPECIFICATIONS PUBLISHED IN G. M. ENGINEERING STANDARDS. TOLERANCE PLUS OR MINUS .010 UNLESS OTHERWISE SPECIFIED.

DWG DATE 22AUG50	SCALE	DR L. MOSLEY	CHK
REFERENCE		PNC	373577
MATERIAL SPEC	GM 286-M STEEL (PROOF LOAD STRESS 91,000 PSI MIN)		
NAME	NUT - HEAVY HEX SLOTTED		
DESCRIPTION 1" B CL 2B	PART NO.	218504	
FINISH PLAIN			