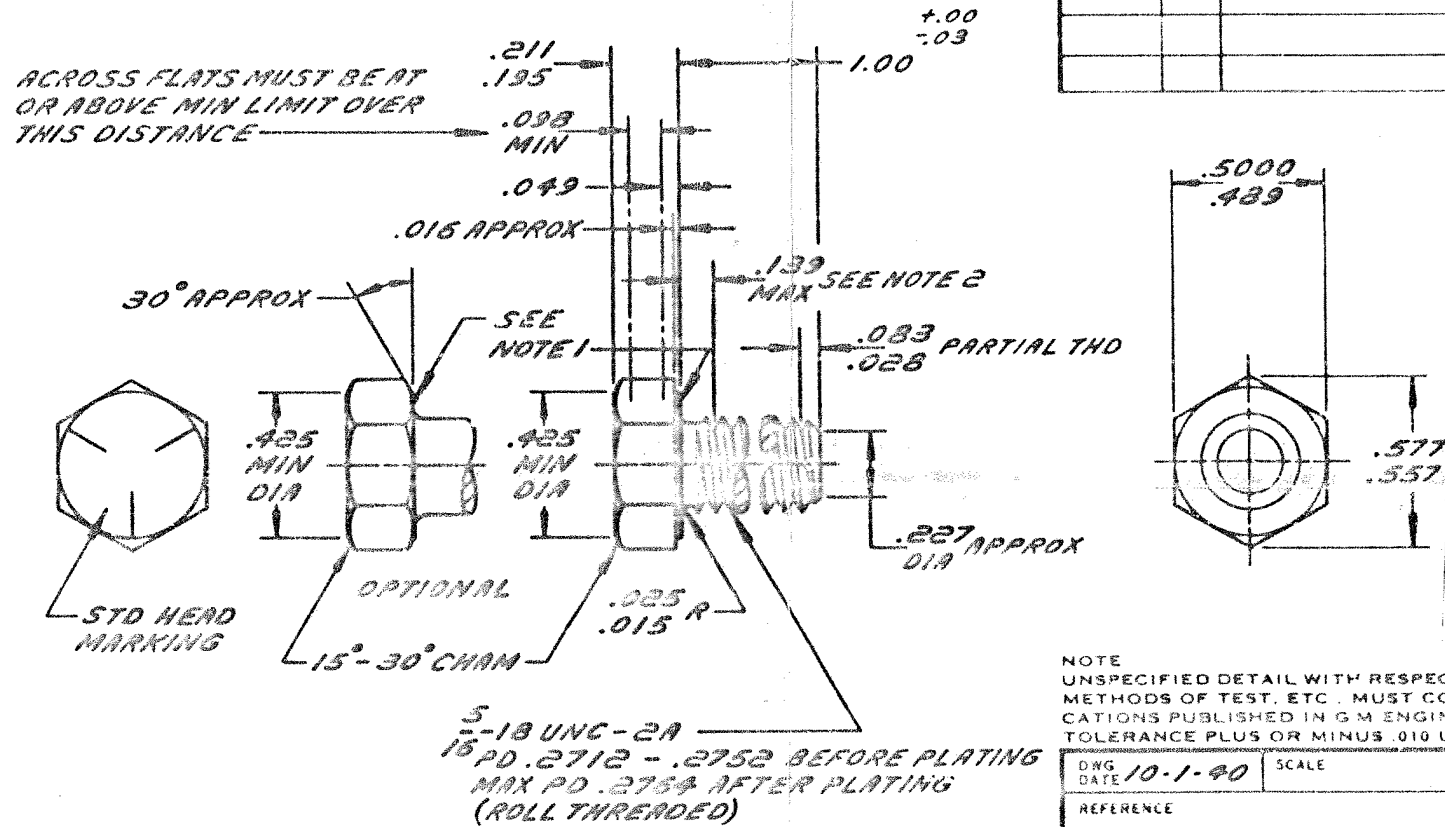


ENGINEERING STANDARDS SECTION

GENERAL MOTORS CORPORATION - G. M. TECHNICAL CENTER - WARREN, MICHIGAN

627 1	Ver No	ON 10A
-------	--------	--------



NOTES:

1. AXIS OF HEAD MUST BE CONCENTRIC WITH AXIS OF BOLT WITHIN .030 TIR. BEARING FACE SHALL BE FLAT WITH DIA OF .450 - .500 AND SQUARE WITH BOLT AXIS WITHIN 2° (REF - .015 MAX TOTAL RUNOUT).
2. DIA OF UNTHREADED SHANK TO BE .271 - .312.

NO. 180079					
DATE	SYM	REVISION RECORD	AUTHORITY	DR	CHK
5-1-69	D	REDRAWN & REVISED		AD	151

NOTE
UNSPECIFIED DETAIL WITH RESPECT TO DIMENSIONS, MATERIAL METHODS OF TEST, ETC. MUST CONFORM TO GENERAL SPECIFICATIONS PUBLISHED IN G M ENGINEERING STANDARDS TOLERANCE PLUS OR MINUS .010 UNLESS OTHERWISE SPECIFIED

DWG DATE 10-1-40	SCALE	DR WK
REFERENCE PLAIN N° 179818	CHK 151	APPD
MATERIAL SPEC GM 280-M STEEL		
NAME BOLT-HEXAGON		

DESCRIPTION 5-18x1" CL 2A	PART NO.
FINISH ZINC	
GM 4342-M (CODE 20)	

180079