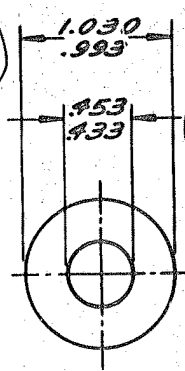


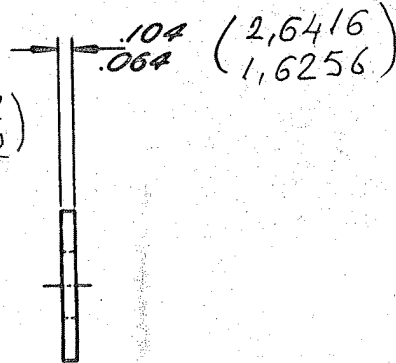
# ENGINEERING STANDARDS SECTION

GENERAL MOTORS CORPORATION - G. M. TECHNICAL CENTER - WARREN, MICHIGAN

(26,162)  
(23,6982)



(11,5062)  
(10,9982)



Ver No | Sira No  
15

DESCRIPTION  
.438 x 1.000 x .083  
FINISH  
PLAIN

NO. 106263					
DATE	SYM.	REVISION RECORD	AUTHORITY	DR.	CK.
3-21-69	B	REDRAWN & REVISED		SB	RD

MUSTER RESX  
SIP TARIH  
SIP NO.  
FIRMA

UNSPECIFIED DETAIL WITH RESPECT TO DIMENSIONS, MATERIAL, METHODS OF TEST, ETC., MUST CONFORM TO GENERAL SPECIFICATIONS PUBLISHED IN GM ENGINEERING STANDARDS. TOLERANCE PLUS OR MINUS .010 UNLESS OTHERWISE SPECIFIED.

DES. DATE 5-3-66	SCALE	DR. EWS
REFERENCE		CK. RD
		APPR.
MATERIAL SPEC. STEEL		
NAME WASHER-TYPE A FLAT		
PART NO. 106263		