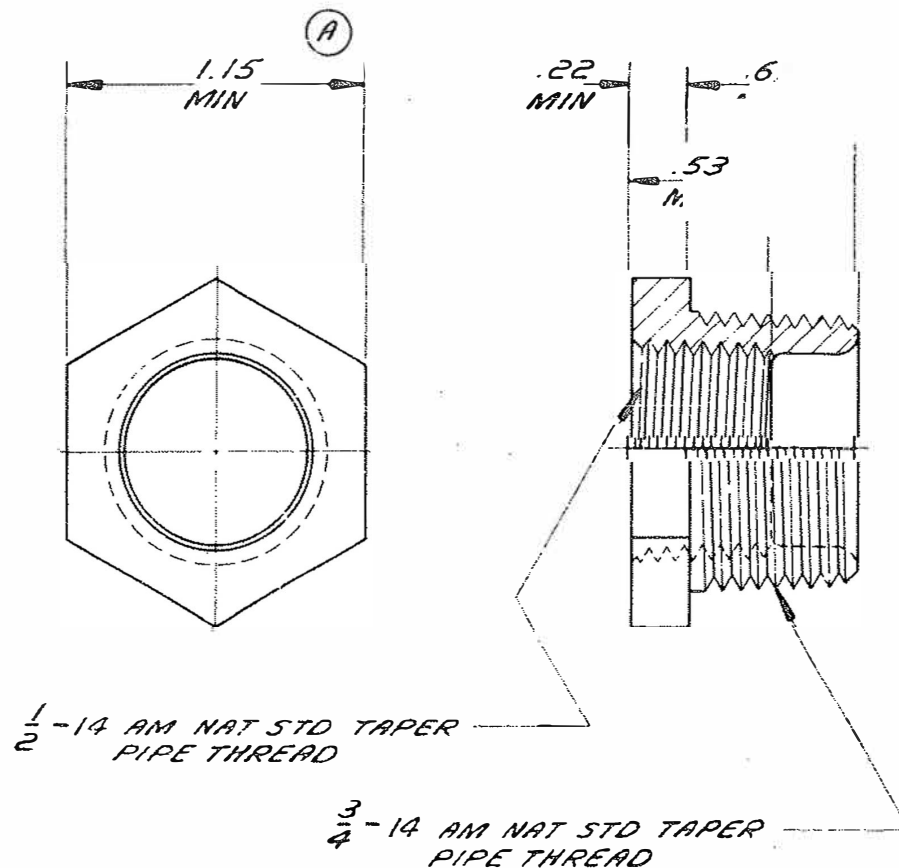


ENGINEERING STANDARDS SECTION  
GENERAL MOTORS CORPORATION, DETROIT 2, MICHIGAN



NO.

144034

DATE	SYM.	REVISION RECORD	AUTHORITY	DR	CK.
7-28-48		REVISED & REDRAWN		DW	
3-29-61	A	WAS 1/8 MIN		JM	

Yer No	Sira No
1718	225

MUST CONFORM TO GENERAL SPECIFICATIONS PUBLISHED IN G.M. ENGINEERING STANDARDS. TOLERANCE  $\pm .010$  UNLESS OTHERWISE SPECIFIED.

DWG. DATE 4-16-46	SCALE	DR. D.A. WILLIAMS
FIRST USED		CK.
		APPR.
REFERENCE		APPR.
		APPR.

MATERIAL SPEC.
G M 11-M MALLEABLE IRON
NAME
REDUCING PIPE BUSHING

DESCRIPTION
4/3 x 1/2
FINISH
PLAIN

PART NO.
144034