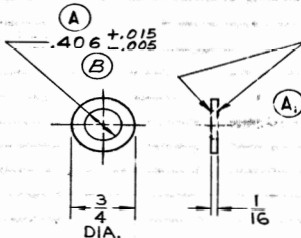


8373316

TOLERANCES ON ALL DIMENSIONS NOT
SPECIFIED ON THIS DRAWING TO BE IN
ACCORDANCE WITH A.S.I. 1100.BREAK ALL SHARP
CORNERS UNLESS
OTHERWISE SPECIFIED.COUNTERSINK ALL TAPPED
HOLS TO 118° & ONE THRU D HOLE.SURFACE FINISH SPEC
IS IN ACCORDANCE
WITH G.M. ENG. 5105.THESE SURFACES MUST BE FLAT
& PARALLEL WITHIN .002 TOTALHEAT TREAT :
HEAT TO 1500°F
QUENCH IN OIL
TEMPER TO ROCKWELL "C" 35-40

PHOSPHATE TREAT PER A.11860

RECORDED

										MATERIAL		NAME OF PART		PART NO.		IT. NO.	
										SAE 1060 STEEL OR AISI 1075 STEEL		ELECTRO-MOTIVE DIVISION		GENERAL MOTORS CORPORATION		LA GRANGE, ILLINOIS, U.S.A.	
50945		B		WAS.430±.005		8-10-72		M		NO. REQUIRED PER ASSEMBLY		DATE		1-12-66		WASHER - SPECIAL	
36794		A		.015±.005X45°CHAM.REMD		10-22-70		M		NO. REQUIRED PER ASSEMBLY		DATE		1-13-66			
36794		A		WAS.390±.005		10-22-70		M		NO. REQUIRED PER ASSEMBLY		DATE		1-13-66			
R.F.C.		REV. LET.		REVISION		DATE		BY		CK.		APV D.		DATE OF PRINT		PART NO.	
FIRST USED ON		645 E TURBO														8373316	