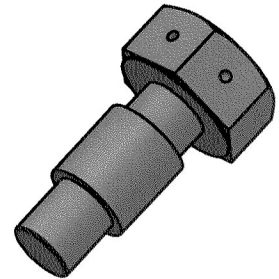


Technical drawing of a mechanical assembly showing dimensions in mm and inches. The drawing includes a side view of a component with a central hole and a cross-section view of a flange. Dimensions are as follows:

- Overall length: 28,6 (1-1/8")
- Distance from left face to center of hole: 9,75
- Distance from center of hole to right face: 6
- Distance from center of hole to center of flange: 12,75
- Distance from center of flange to right face: 9,85
- Radius of fillet: 5,48
- Radius of hole: 5
- Hole diameter: $\varnothing 1,65$
- Flange outer diameter: $\varnothing 9,90$
- Flange inner diameter: $\varnothing 9,50$






Diagram illustrating the geometry of the hexagonal base. The width of the hexagon is labeled as 19 inches.

Yer No	Sıra No
1711	181



	CİVATA (özel altıgen başlık 1/2-13x1-1/8)	EN ISO 898-1	8.8		
Adet	Parçanın Adı	Standart No	Malzeme	Birim Ağırlık Kg	Yarı Mamülün Ölçüleri Tasnif No

Kritik kalite parametresi şu şekilde gösterilmiştir: **CTQ**

Grup No:				Tolerans verilmeyen ölçüler için ilgili standartlar: EN 13920 BBF (Kaynaklı yapılar) EN 22768-1 m (Uzunluk ve açı ölçüleri) EN 22768-2 K (Şekil ve Konumlar)		TÜRASAS Eskişehir Bölge Müdürlüğü	
Tip	Tadilat						
DE22000-DE33000					Onay:		den proje
	İşe Bakan	F.YILMAZ			Tarih: 19.10.2020		Bu yerine geçti.
	Resim	O.KAÇMAZ					
	Kontrol	H.YILMAZ					Komple Resim/Poz No
	Kaynak Müh.						
	Ölçek	2:1			CİVATA (özel altıgen başlık 1/2-13x1-1/8)		8029495