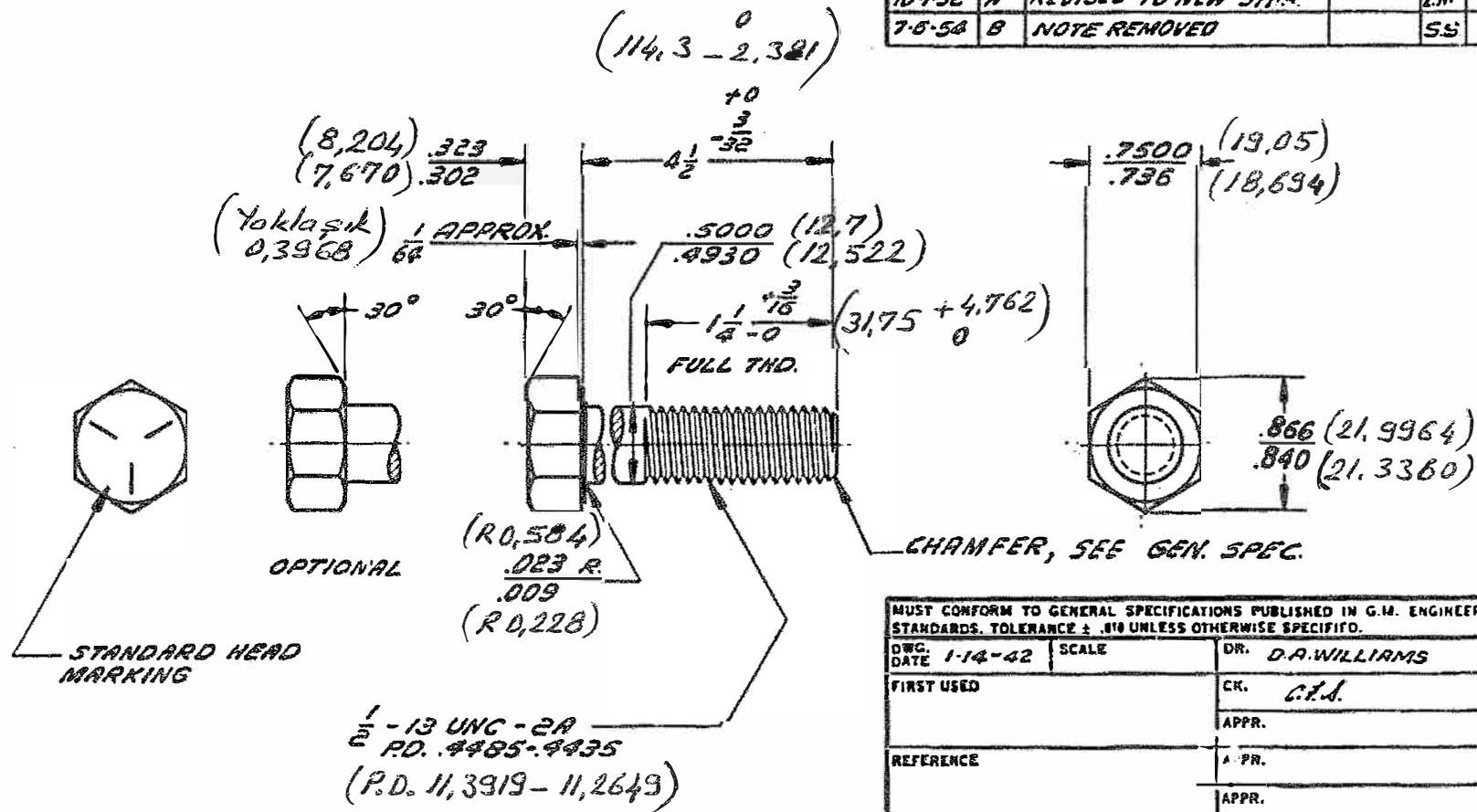


ENGINEERING STANDARDS SECTION
GENERAL MOTORS CORPORATION, DETROIT 2, MICHIGAN

Ver No 1418 / 455
Site No



NO. 190256					
DATE	SYM.	REVISION RECORD	AUTHORITY	DR.	CK.
4-1-49		REVISED & REDRAWN		DW	
10-1-52	A	REVISED TO NEW STDS.		L.N.	
7-8-54	B	NOTE REMOVED		SS	

MUST CONFORM TO GENERAL SPECIFICATIONS PUBLISHED IN G.M. ENGINEERING STANDARDS. TOLERANCE $\pm .010$ UNLESS OTHERWISE SPECIFIED.		
DWG. DATE 1-14-42	SCALE	DR. D.A. WILLIAMS
FIRST USED	CK. C.T.A.	APPR.
REFERENCE	A. PR.	APPR.
MATERIAL SPEC. EN 82 G.M. 280-M STEEL		
NAME HEXAGON BOLT		
PART NO. 190256		

DESCRIPTION	1-13 x 4 1/2 CL. 2A
FINISH	PLAIN