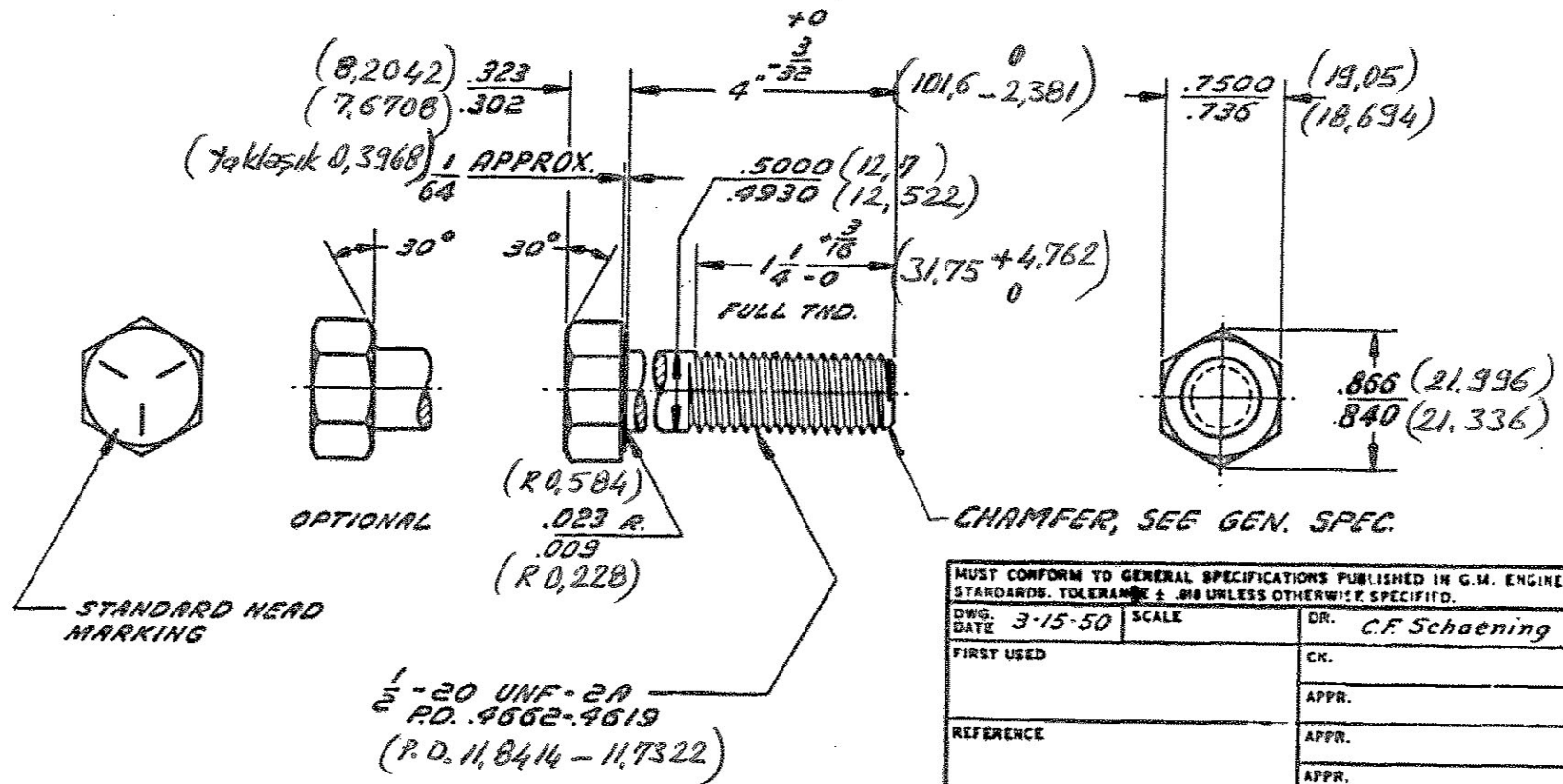


# ENGINEERING STANDARDS SECTION

GENERAL MOTORS CORPORATION, DETROIT 2, MICHIGAN

NO.		181446			
DATE	SYM.	REVISION RECORD	AUTHORITY	DR.	CK.
10-1-52	A	REVISED TO NEW STDS.		L.N.	
5-22-54	B	NOTE REMOVED		S.S.	



MUST CONFORM TO GENERAL SPECIFICATIONS PUBLISHED IN G.M. ENGINEERING STANDARDS. TOLERANCE $\pm .010$ UNLESS OTHERWISE SPECIFIED.		
DWG. DATE	3-15-50	SCALE
FIRST USED		DR. C.F. Schaening
REFERENCE		CK.
		APPR.
MATERIAL SPEC.		APPR.
		APPR.
NAME		
PART NO.		

## ENGINEERING STANDARDS SECTION