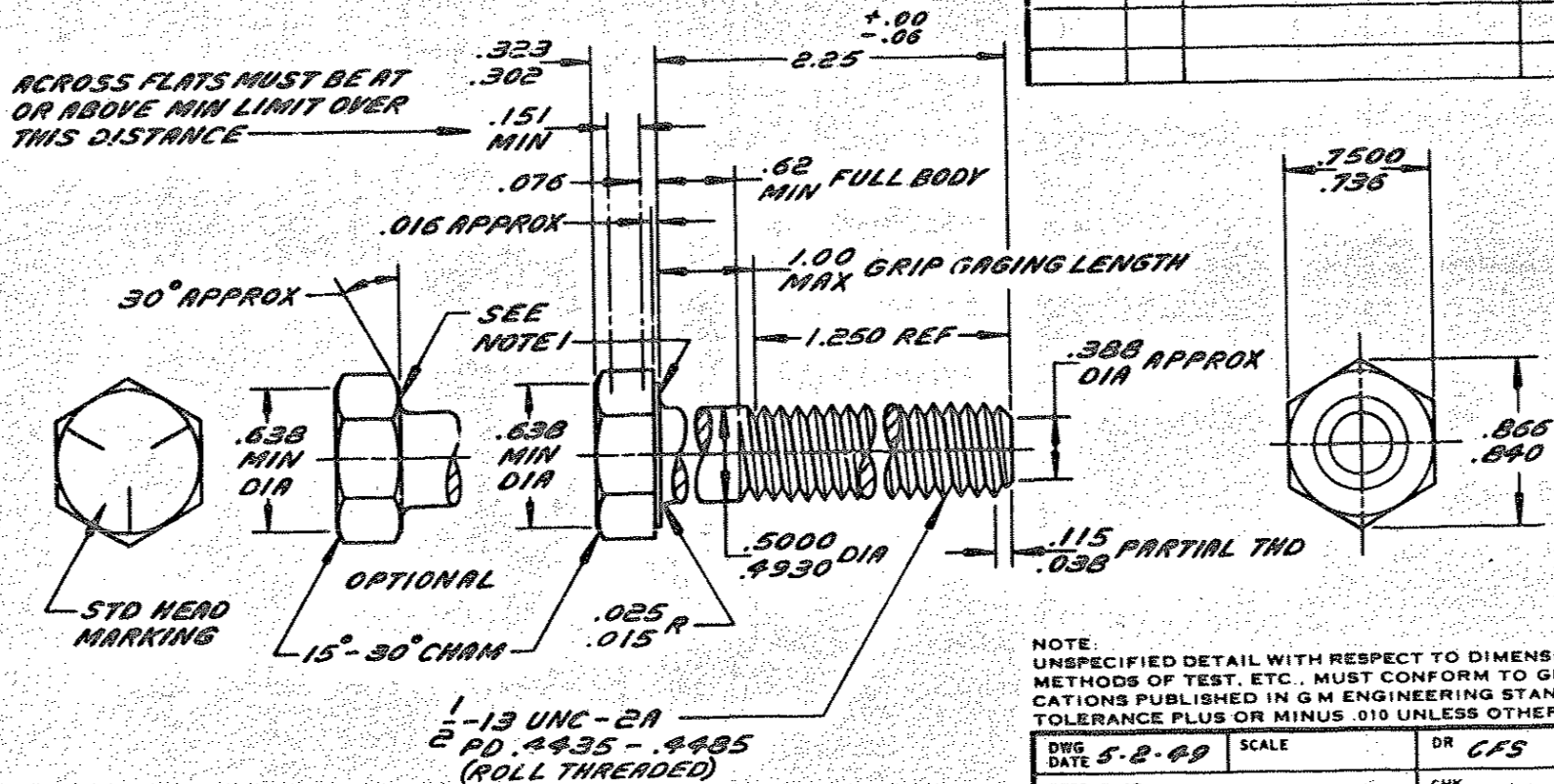


ENGINEERING STANDARDS SECTION

GENERAL MOTORS CORPORATION - G. M. TECHNICAL CENTER - WARREN, MICHIGAN



NOTE:
UNSPECIFIED DETAIL WITH RESPECT TO DIMENSIONS, MATERIAL, METHODS OF TEST, ETC., MUST CONFORM TO GENERAL SPECIFICATIONS PUBLISHED IN G M ENGINEERING STANDARDS. TOLERANCE PLUS OR MINUS .010 UNLESS OTHERWISE SPECIFIED.

DWG DATE 5-2-69	SCALE	DR CFS
REFERENCE		CHK
		APPD
MATERIAL SPEC GM 280-M STEEL		
NAME BOLT-HEXAGON		
PART NO. 179890		

Ver No 1
Sigs No 17181 327

DESCRIPTION 1/2-13x2 1/4 CL 2A
FINISH PLAIN