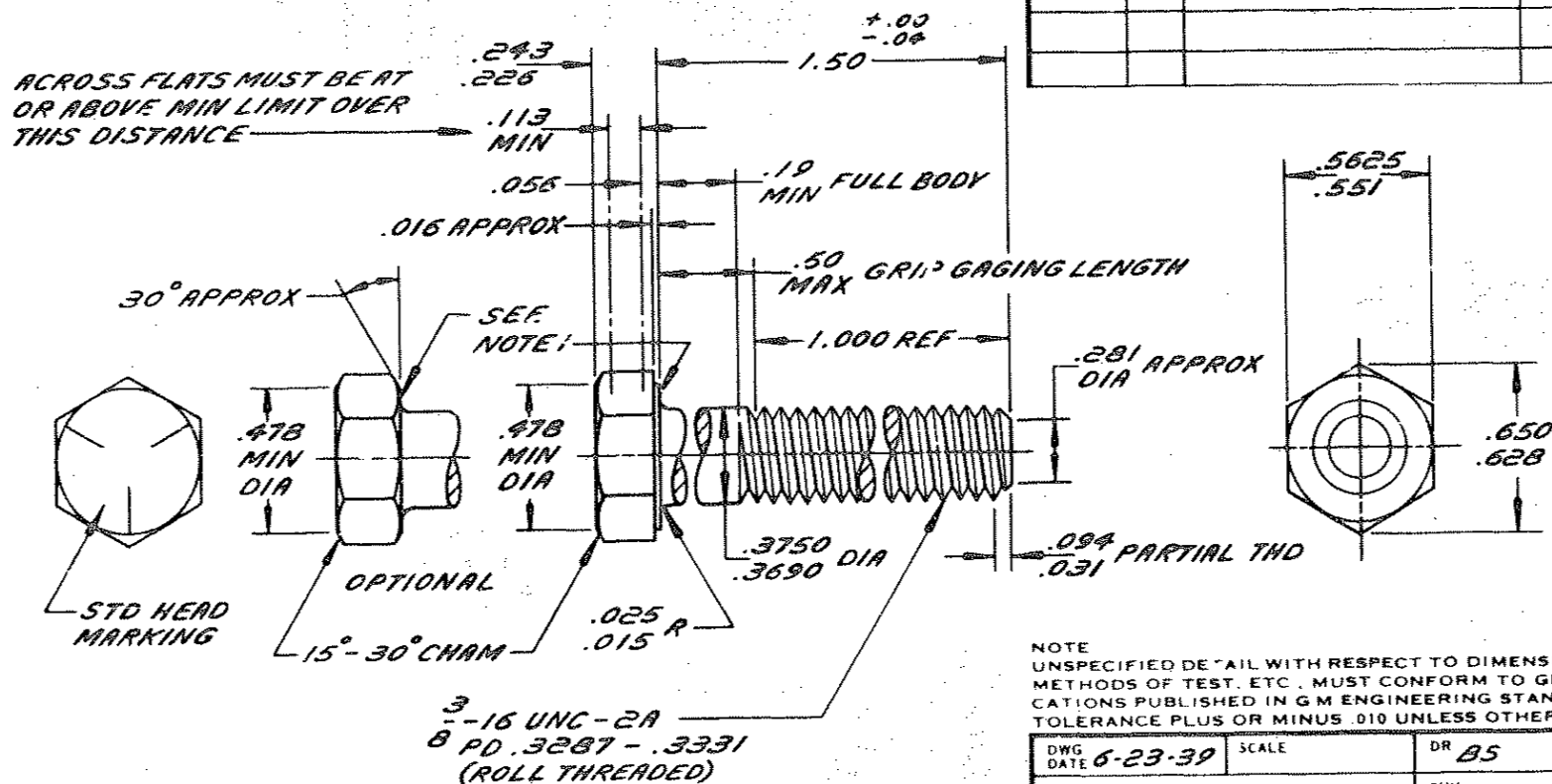


ENGINEERING STANDARDS SECTION

GENERAL MOTORS CORPORATION - G. M. TECHNICAL CENTER - WARREN, MICHIGAN

BRUNING 44161



NOTES:

1. AXIS OF HEAD MUST BE CONCENTRIC WITH AXIS OF BOLT WITHIN .034 TIR. BEARING FACE SHALL BE FLAT WITH DIA OF .506 - .562 AND SQUARE WITH BOLT AXIS WITHIN 2° (REF-.018 MAX TOTAL RUNOUT).

NO. 179843					
DATE	SYM	REVISION RECORD		AUTHORITY	DR
3-1-69	E	REDRAWN & REVISED			RD

NOTE
UNSPECIFIED DETAIL WITH RESPECT TO DIMENSIONS, MATERIAL METHODS OF TEST, ETC, MUST CONFORM TO GENERAL SPECIFICATIONS PUBLISHED IN G M ENGINEERING STANDARDS TOLERANCE PLUS OR MINUS .010 UNLESS OTHERWISE SPECIFIED

DWG DATE 6-23-39	SCALE	DR BS
REFERENCE		CHK
		APPD
MATERIAL SPEC		
GM 280-M STEEL		
NAME		
BOLT-HEXAGON		
PART NO.		
179843		

DESCRIPTION	3-16 x 1/2 CL 2A
FINISH	PLAIN

Ver No	Sign No
1718/313	