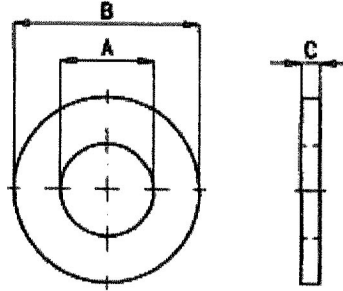


KONU DE 33000 GM LOKOMOTİF DÜZ RONDELALARI
REFERANS



ANMA ÖLÇÜSÜ	KATALOG NUMARASI							
	A	B	C		ÇELİK		PRİNG	BAKIR
	İç Çap Ölçüsü	Dış Çap Ölçüsü	Max.	Min.	Düz	Zn	Düz	Düz
	.125	.312	.040	.025	221416	218322	221418	221424
#6	.156	.375	.065	.036	103337	131014	113818	116101
#8	.188	.438	.065	.036	114986	131015	116089	114985
	.219	.438	.065	.036	446160	446161	446165	446168
#10	.218	.500	.065	.036	103338	120391	116090	113893
3/16	.250	.562	.065	.036	106260	120385	114946	446201
1/4	.281	.625	.080	.051	103339	120392	116091	116102
1/4	.312	.734	.080	.051	106261	120386	114947	446202
5/16	.344	.688	.080	.051	103340	120393	116092	115308
5/16	.375	.875	.104	.064	446362	446363	446367	446370
3/8	.406	.812	.080	.051	103341	120394	116093	116103
3/8	.438	1.000	.104	.064	106263	120388	114949	446371
7/16	.469	.922	.080	.051	103342	120395	116094	116104
7/16	.500	1.250	.104	.064	106264	120389	114950	446372
1/2	.531	1.062	.121	.074	103343	120396	116095	116105
1/2	.562	1.375	.132	.086	106265	120390	114951	446373
9/16	.594	1.156	.121	.074	103344	121458	116096	116106
9/16	.625	1.469	.132	.086	106266	130998	114952	446374
5/8	.656	1.312	.121	.074	103345	131016	116097	116107
5/8	.688	1.750	.160	.108	106267	130999	114953	446375
3/4	.812	1.469	.160	.108	103346	131017	116098	116108
3/4	.812	2.000	.177	.122	106268	131000	114954	446376
7/8	.938	1.750	.160	.108	103347	131018	116099	116109
7/8	.938	2.250	.192	.136	106269	131001	114955	446377

KONU DE 33000 GM LOKOMOTİF DÜZ RONDELALARI
REFERANS

ANMA ÖLÇÜSÜ	KATALOG NUMARASI							
	A	B	C		ÇELİK		PRİNC	BAKIR
	İç Çap Ölçüsü	Dış Çap Ölçüsü	Max.	Min.	Düz	Zn	Düz	Düz
1	1.062	2.000	.160	.108	103348	131019	116100	116110
1	1.062	2.500	.192	.136	106270	131002	114956	446378
	1-3/16	2-1/2	.192	.136	446283	446284	446288	446291
1-1/8	1.250	2.750	.192	.136	136295	172755	172763	446384
	1-5/16	2-3/4	.192	.136	446292	446293	446297	446300
1-1/4	1.375	3.000	.192	.136	136296	172756	172766	446390
	1-7/16	3.000	.213	.153	446301	446302	446306	446309
1-3/8	1.500	3.250	.213	.153	172744	172757	172790	446396
	1-9/16	3-1/4	.213	.153	446310	446311	446315	446318
1-1/2	1.625	3.500	.213	.153	172745	172758	172791	446402
	1-11/16	3-1/2	.213	.153	446319	446320	446324	446327
1-5/8	1.750	3.750	.213	.153	424709	446403	446407	446410
	1-13/16	3-3/4	.213	.153	446328	446329	446334	446337
1-3/4	1.875	4.000	.213	.153	172746	172760	172796	446416
	1-15/16	4.000	.213	.153	446338	446339	446343	446346
1-7/8	2.000	4.250	.213	.153	424710	446417	446421	446424
	2-1/16	4-1/4	.213	.153	446347	446348	446352	446469
2	2.125	4.500	.213	.153	172754	172762	172797	446431
1-1/32	1-1/32	2.000	3/16	—	—	8018847	—	—
1/4	.281	.500	.065	—	9414320	—	—	—
5/16	.312	.562	.080	—	6101223	—	—	—