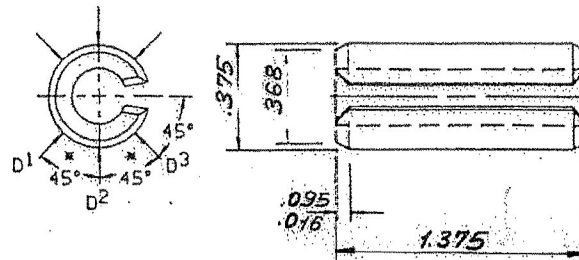


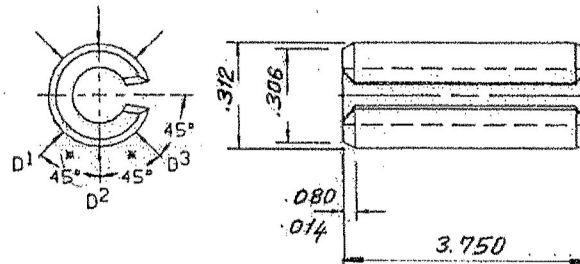
1



GM Res. No  
45 36 73

Mlz.  
SAE 1070-1095 Çelik  
HCR 46-53

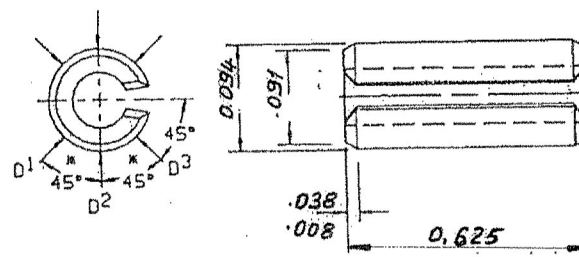
2



GM Res. No  
45 55 22

Mlz.  
SAE 1070-1095 Çelik  
HCR 46-53

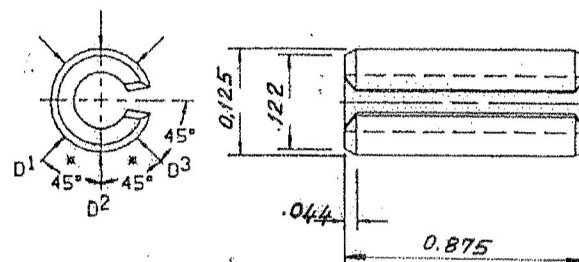
3



GM Res. No  
45 57 35

Mlz.  
SAE 1070-1095 Çelik  
HCR 46-53

4



GM Res No  
45 58 62

Mlz.  
SAE 1070-1095 Çelik  
HCR 46-53

TB 1148 - D6