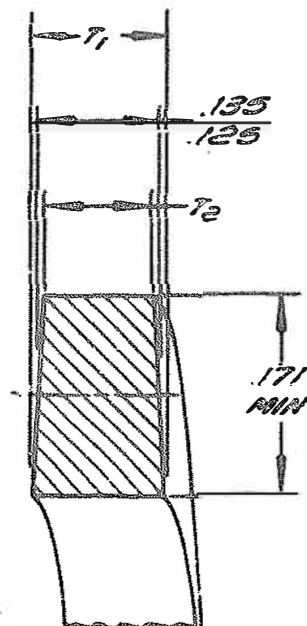


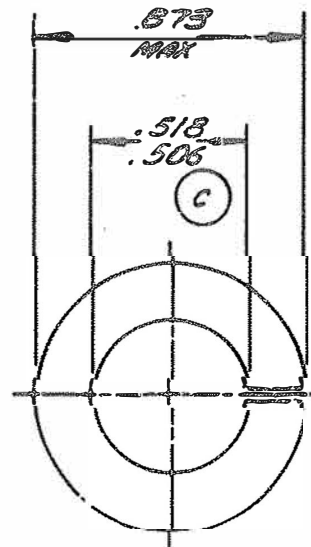
ENGINEERING STANDARDS SECTION

GENERAL MOTORS CORPORATION - G. M. TECHNICAL CENTER - WARREN, MICHIGAN

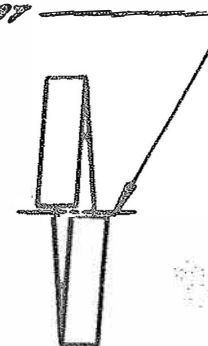
T_1 MINUS $T_2 = .0110 - .0055$



ENLARGED SECTION



GAP AND RELATIONSHIP OF ENDS
TO BE SUCH AS TO PREVENT
WASHERS TANGLING AND INSURE
THAT WASHERS WILL COMPRESS
FLAT



NOTE:

UNSPECIFIED DETAIL WITH RESPECT TO DIMENSIONS, MATERIAL, METHODS OF TEST, ETC., MUST CONFORM TO GENERAL SPECIFICATIONS PUBLISHED IN GM ENGINEERING STANDARDS. TOLERANCE PLUS OR MINUS .010 UNLESS OTHERWISE SPECIFIED.

DWG. DATE 5-11-26	SCALE	DR. DH	CHK SS
REFERENCE		PNC 371111	
MATERIAL SPEC. STEEL - SEE NOTE (D) HRC 45-51			
NAME WASHER-REGULAR HELICAL SPRING LOCK			
DESCRIPTION $\frac{1}{2}$ (.500)		PART NO. 103323	
FINISH PLAIN			

Yer No	Sira No
17481	16