

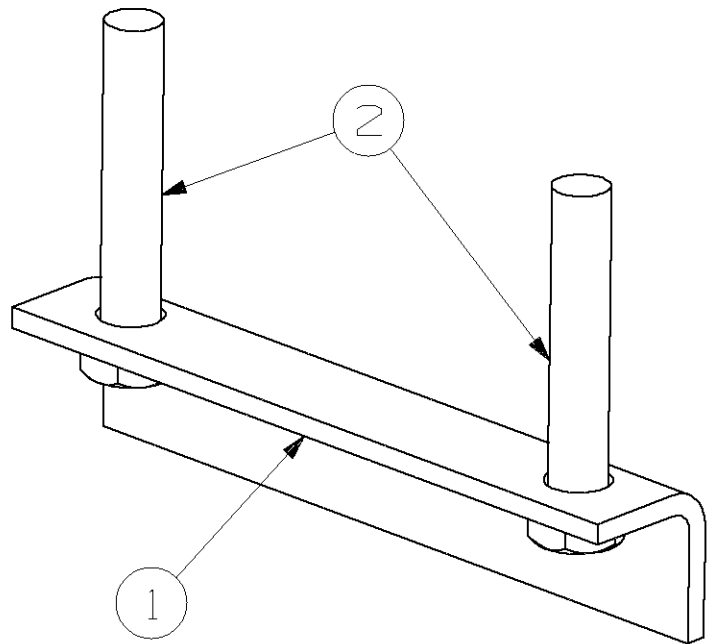
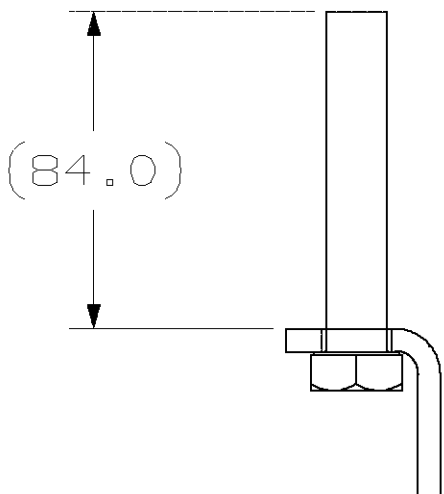
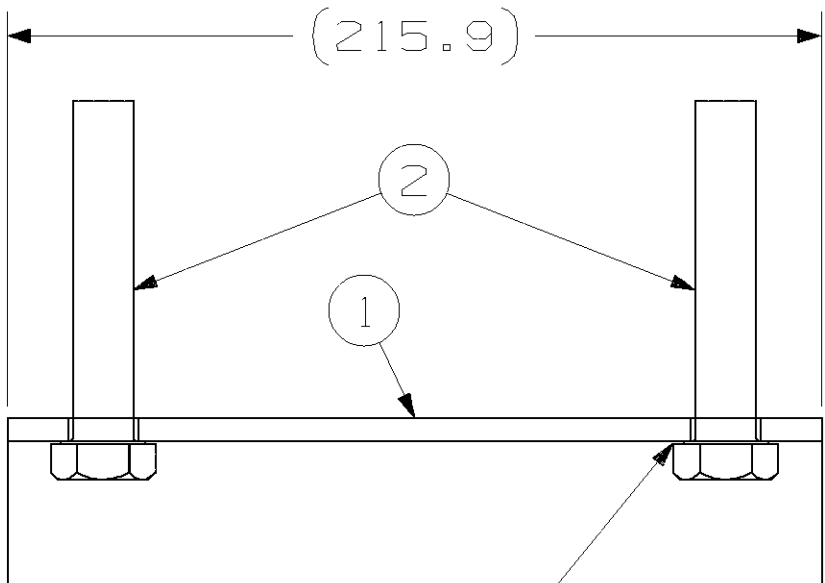
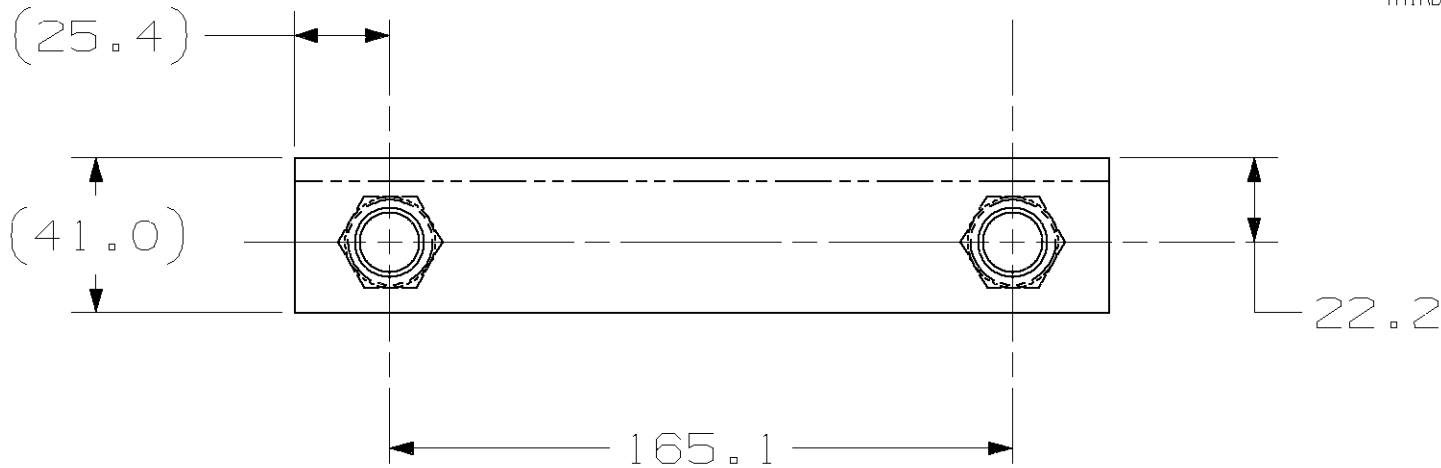
THIS DRAWING, WHICH CONTAINS PROPRIETARY INFORMATION, IS THE PROPERTY OF GENERAL ELECTRIC COMPANY. IT SHALL NOT BE REPRODUCED IN ANY MANNER NOR DISCLOSED TO THIRD PARTIES WITHOUT WRITTEN PERMISSION OF GENERAL ELECTRIC COMPANY.

DWG NO 84B542517

SH 1

REVISION HISTORY

REV	DATE	DRAFTER ENGINEER	CO #. IN # DESCRIPTION
-	-	-	-



1 SEE DEVELOPMENT OF P1 ON SHEET 2

G1 1.1 Kg [ 2.4 LBS. ]

TYP ITEM 2 TO ITEM 1  
z 6 / 2 SIDES - 180°

NOTES:

1. WELDING CONFORMS TO EN 15085 (2007)
2. UNLESS OTHERWISE SPECIFIED WELD CLASSIFICATIONS DEFAULT TO:  
WELD PERFORMANCE: CP C2  
INSPECTION CLASS: CT 3  
CERTIFICATION LEVEL: CL1

DRAFTING PRACTICES ON THIS DRAWING CONFORM TO THE 84A222563 SERIES OF DOCUMENTS BASED ON ASME Y14.5 1994 & Y14.100 2004

REV STATUS OF SHEET	REVISION SHEET	0 2
---------------------	----------------	-----

DIMENSIONS ARE IN MILLIMETERS (X,X) IN INCHES	SEE SEPARATE PARTS LIST		P1	0
	CTQ SYMBOL: $\ominus$	CTQ'S PRESENT? NO	G1	0
UNLESS OTHERWISE SPECIFIED, TOLERANCES PER 84A226035-VC	CTQ LOCATIONS: X		PART OR GROUP	CURRENT REVISION
	PLAN REF NONE FCF	LATER		
SIGNATURES		DATE	GE TRANSPORTATION ERIE, PA	
DRAWN	G.S. BALL	12-JAN-2012	TITLE CLEAT SUPPORT (METRIC)	
ISSUED	G.S. BALL	12-JAN-2012	FIRST MADE FOR PH37ACAI 136102	
ENGRG H. ZACHERL			DWG NO 84B542517	
			CONT ON SHEET 2	SH NO 1