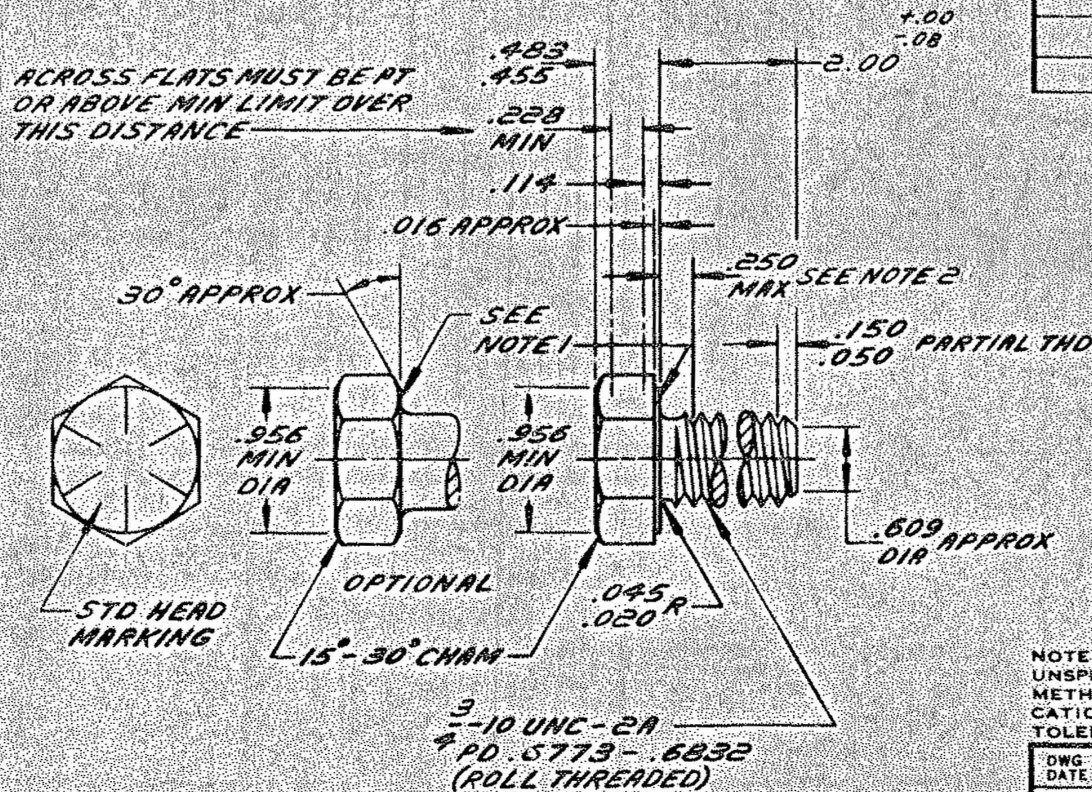


ENGINEERING STANDARDS SECTION

GENERAL MOTORS CORPORATION - G. M. TECHNICAL CENTER - WARREN, MICHIGAN



NO. 223450					
DATE	SYM	REVISION RECORD	AUTHORITY	DR	CHK
6-28-77	B	REDRAWN & REVISED		LC	PM

NOTE
UNSPECIFIED DETAIL WITH RESPECT TO DIMENSIONS, MATERIAL METHODS OF TEST, ETC., MUST CONFORM TO GENERAL SPECIFICATIONS PUBLISHED IN G. M. ENGINEERING STANDARDS. TOLERANCE PLUS OR MINUS .010 UNLESS OTHERWISE SPECIFIED.

DWG DATE 12-9-44	SCALE	DR WK	CHK DV
REFERENCE		PNC 372833	
MATERIAL SPEC GM 300-M STEEL			
NAME BOLT-HEXAGON			
PART NO. 223450			