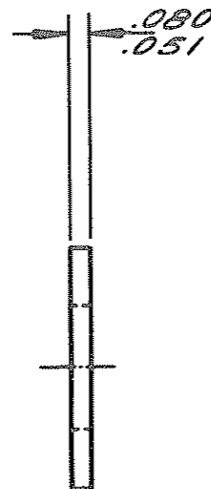
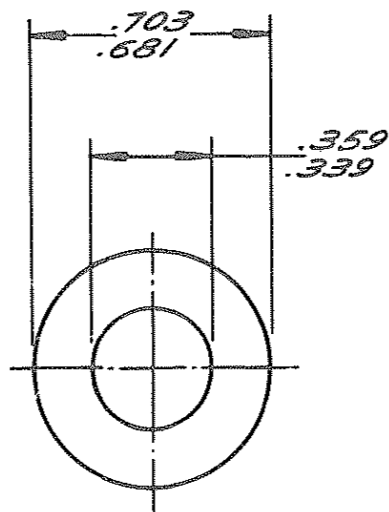


ENGINEERING STANDARDS SECTION

GENERAL MOTORS CORPORATION - G. M. TECHNICAL CENTER - WARREN, MICHIGAN



120393

DATE	SYM	REVISION RECORD	AUTHORITY	DR	CHK
1-16-68	C	REDRAWN & REVISED		SIA	

Ver No	Sira No
1718	147

NOTE:
UNSPECIFIED DETAIL WITH RESPECT TO DIMENSIONS, MATERIAL,
METHODS OF TEST, ETC., MUST CONFORM TO GENERAL SPECIFI-
CATIONS PUBLISHED IN G M ENGINEERING STANDARDS.
TOLERANCE PLUS OR MINUS .010 UNLESS OTHERWISE SPECIFIED.

DWG DATE 3-25-31	SCALE	DR EWS
REFERENCE PLAIN No 103390		CHK
		APPD
MATERIAL SPEC STEEL		
NAME WASHER - TYPE A PLAIN		
PART NO. 120393		

DESCRIPTION .344 x .688 x .065
FINISH ZINC GM 4342-M (CODE 20)