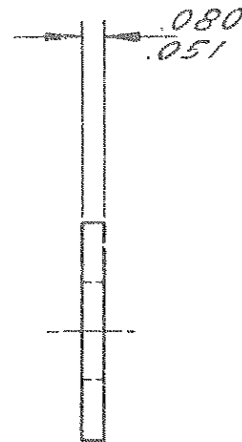
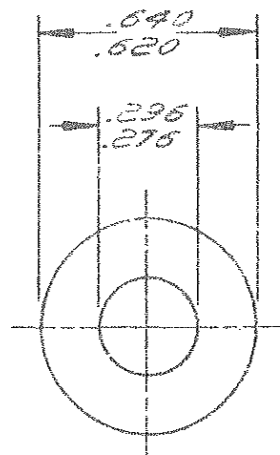


ENGINEERING STANDARDS SECTION

GENERAL MOTORS CORPORATION - G. M. TECHNICAL CENTER - WARREN, MICHIGAN



NO.

120392

DATE	SYM.	REVISION RECORD	AUTHORITY	DR.	CK.
12-12-67	B	REDRAWN & REVISED		SLS	
11-1-77	C	"U32" ADDED TO SPEC		PM	

Yr No	Sira No
1718	146

UNSPECIFIED DETAIL WITH RESPECT TO DIMENSIONS. MATERIAL. METHODS OF TEST, ETC. MUST CONFORM TO GENERAL SPECIFICATIONS PUBLISHED IN GM ENGINEERING STANDARDS. TOLERANCE PLUS OR MINUS .010 UNLESS OTHERWISE SPECIFIED.

DWG. DATE 7-8-77	SCALE	DR. ENS	CHK WK
REFERENCE PLAIN N^o 103339		PNC 311232	
MATERIAL SPEC. STEEL			
NAME WASHER-TYPE A FLAT			
DESCRIPTION .281X.625X.065		PART NO.	
FINISH ZINC			
GM4342-M, CODE 20U32			

120392